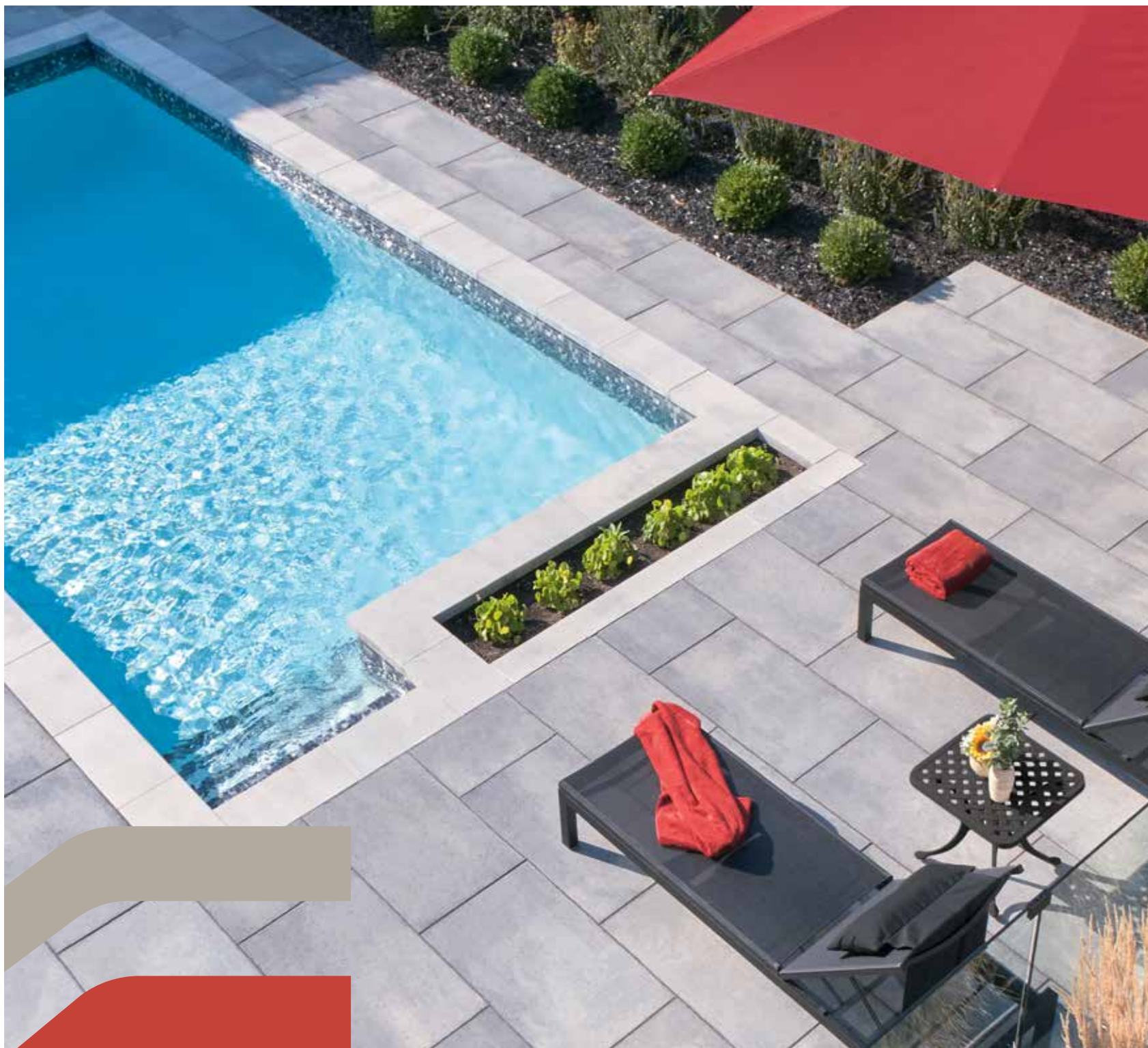


# PERMACON



**2023**  
**Landscape Products**

An idyllic environment,  
an oasis of peace.  
The exterior reinvented  
with unique and  
innovative products.



# Table of Contents

28

## Alternative Landscaping

- 30 Artex Panel System
- N 31 Orion Fireplace

32

## Slabs

- 34 Cassara
- 35 City
- 36 Esbelto
- 37 Mega Melville
- 38 Melville 24 x 24
- 39 Melville 60
- 39 Melville 60 Small Rectangle
- 40 Melville 60 Textureguard
- 41 Metrik
- 42 Mondrian Plus 50
- 43 Mondrian Plus 60
- 43 Mondrian Plus 60 Small Rectangle
- 44 Rosebel
- N 45 Wilfrid

46

## Pavers

- 48 Cassara Large Rectangle
- 49 Cassara Verde
- 50 Esbelto
- 51 Kensington Smooth
- 52 Kensington
- 53 Mega Melville
- 54 Melville 80
- 54 Melville 80 Small Rectangle
- 56 Melville 80 Textureguard
- 57 Melville Aqua
- 58 Melville Plank
- 59 Mondrian Plus 80
- 59 Mondrian Plus 80 Small Rectangle
- 60 Trafalgar 60
- 61 Vendome 60
- 61 Vendome 80
- N 62 Virage
- N 63 Zen

64

## Walls

- 66 Grande and Grande Wedge
- 67 Lafitt Tandem
- 68 Melville Tandem
- N 69 Orion
- 70 RB
- 71 Urbano
- N 72 Vario
- 74 Wallstone
- 74 Wedgestone

74

## Capping

- 76 Lafitt Plus
- 79 Laguna
- N 78 Leno
- 79 Marina
- 80 Melville Plus

## Steps

- 77 Lafitt Plus
- 81 Melville Plus 60 and 90

## Mega Steps

- 84 Mega Lafitt Plus
- 85 Mega Melville Plus
- 86 Valentia

## Curbs

- 88 Lafitt
- 89 Melville

90

## Elements

- 91 Fireplace
- 91 Wood Boxes
- 91 Grill Island
- 91 Brick Oven

92

## Mirage Porcelain Tiles

- 93 Noon
- 94 Quarziti 2.0

## Miscellaneous

- 95 Polymeric Sands
- 96 Warranty
- 99 Tools available at permacon.ca



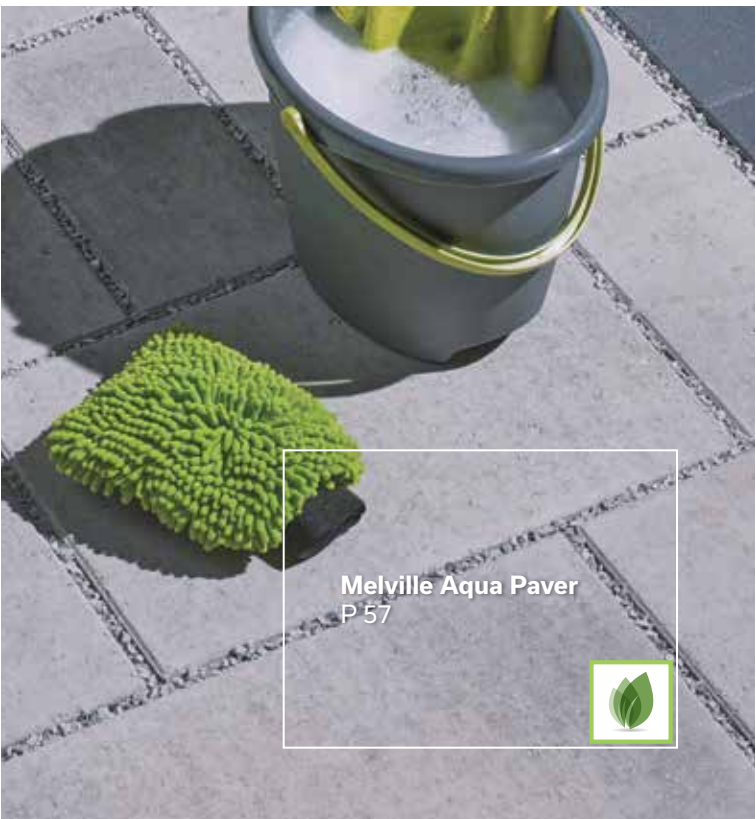


**In harmony with the environment.**

High-quality, aesthetically appealing, and perfectly blended with the surrounding greenery, ecological paving stones are part of a more sustainable approach to landscaping. Our permeable paver options filter runoff water and combat heat islands in urban areas. An innovation that combines form and function.



Build with sustainability and ecology in mind.





Simply breathe  
and wonder.

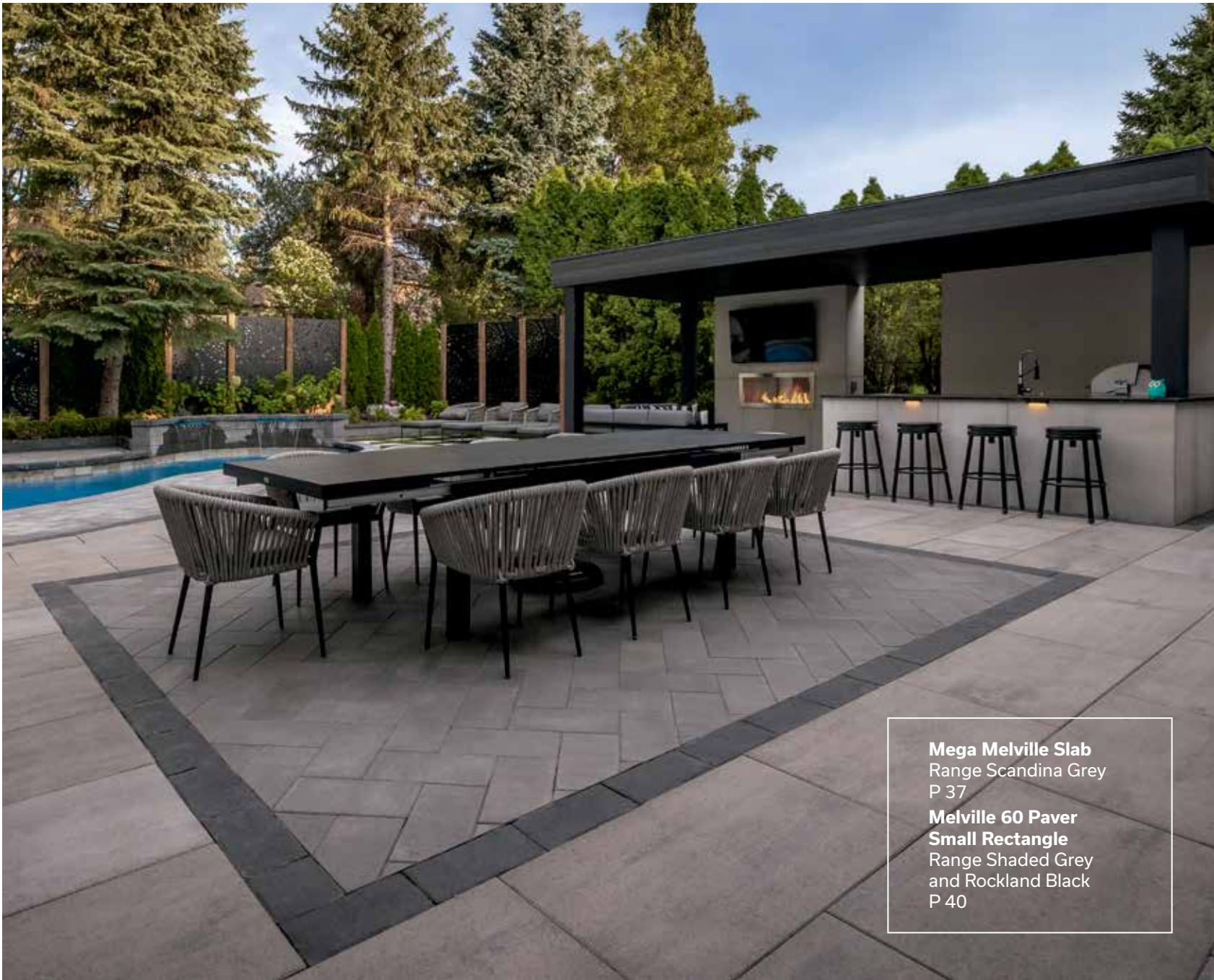


**Melville 24 x 24 Slab**  
Blizzard  
P 38  
**Melville Plank Paver**  
Range Scandina Grey  
P 58







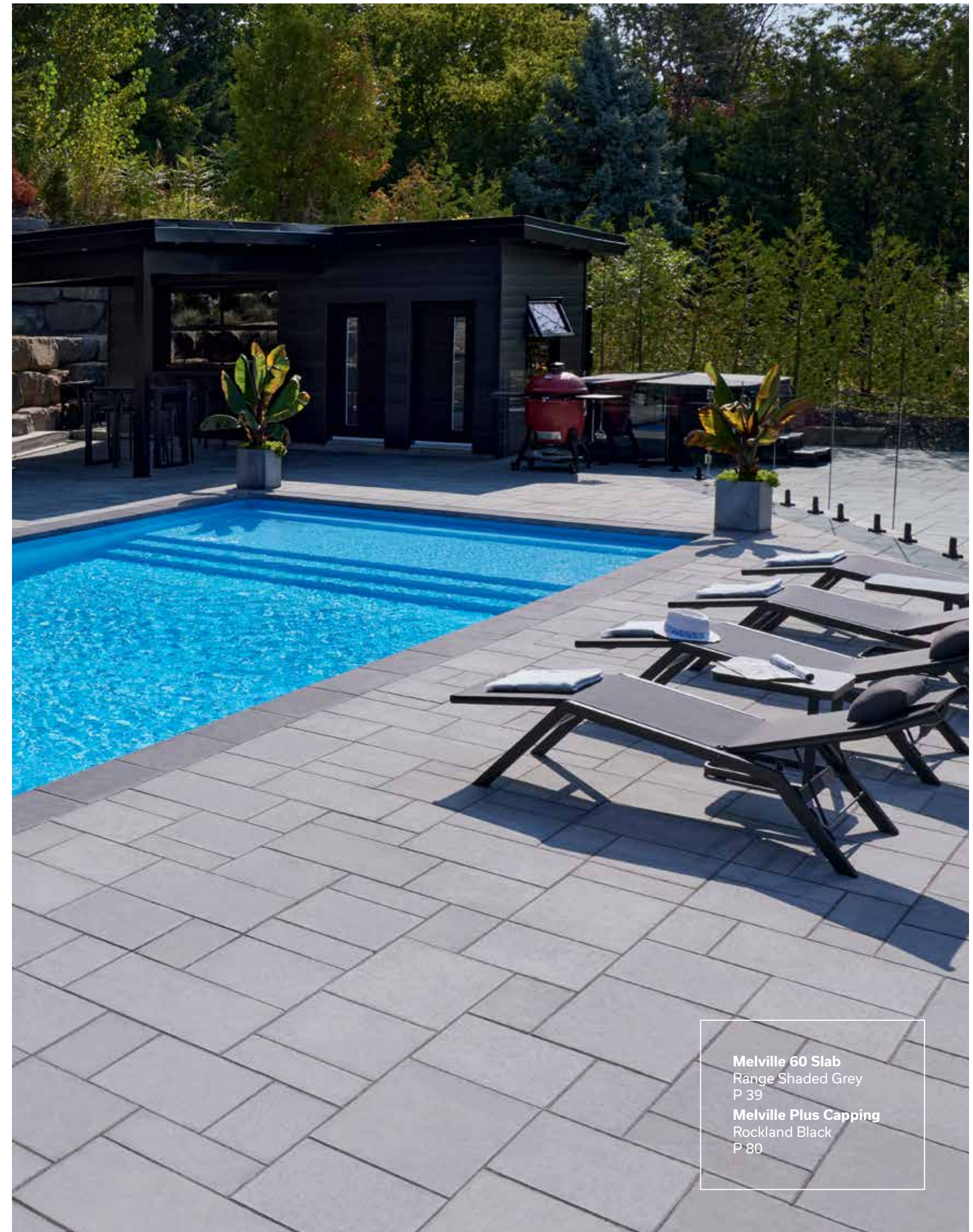
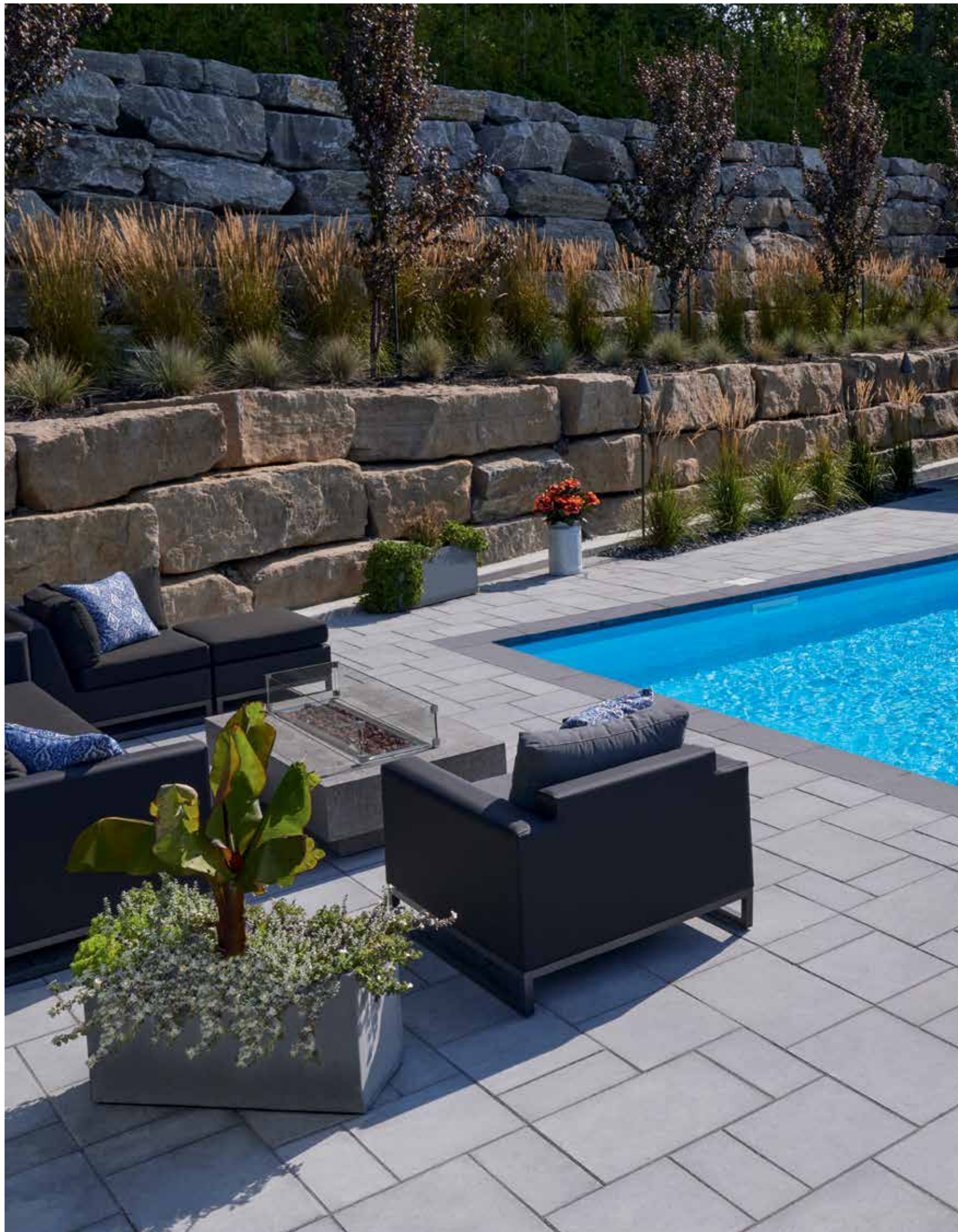


**Mega Melville Slab**  
Range Scandina Grey  
P 37  
**Melville 60 Paver**  
**Small Rectangle**  
Range Shaded Grey  
and Rockland Black  
P 40



**Melville 24 x 24 Slab**  
Blizzard  
P 38





**Melville 60 Slab**  
Range Shaded Grey  
P 39  
**Melville Plus Capping**  
Rockland Black  
P 80

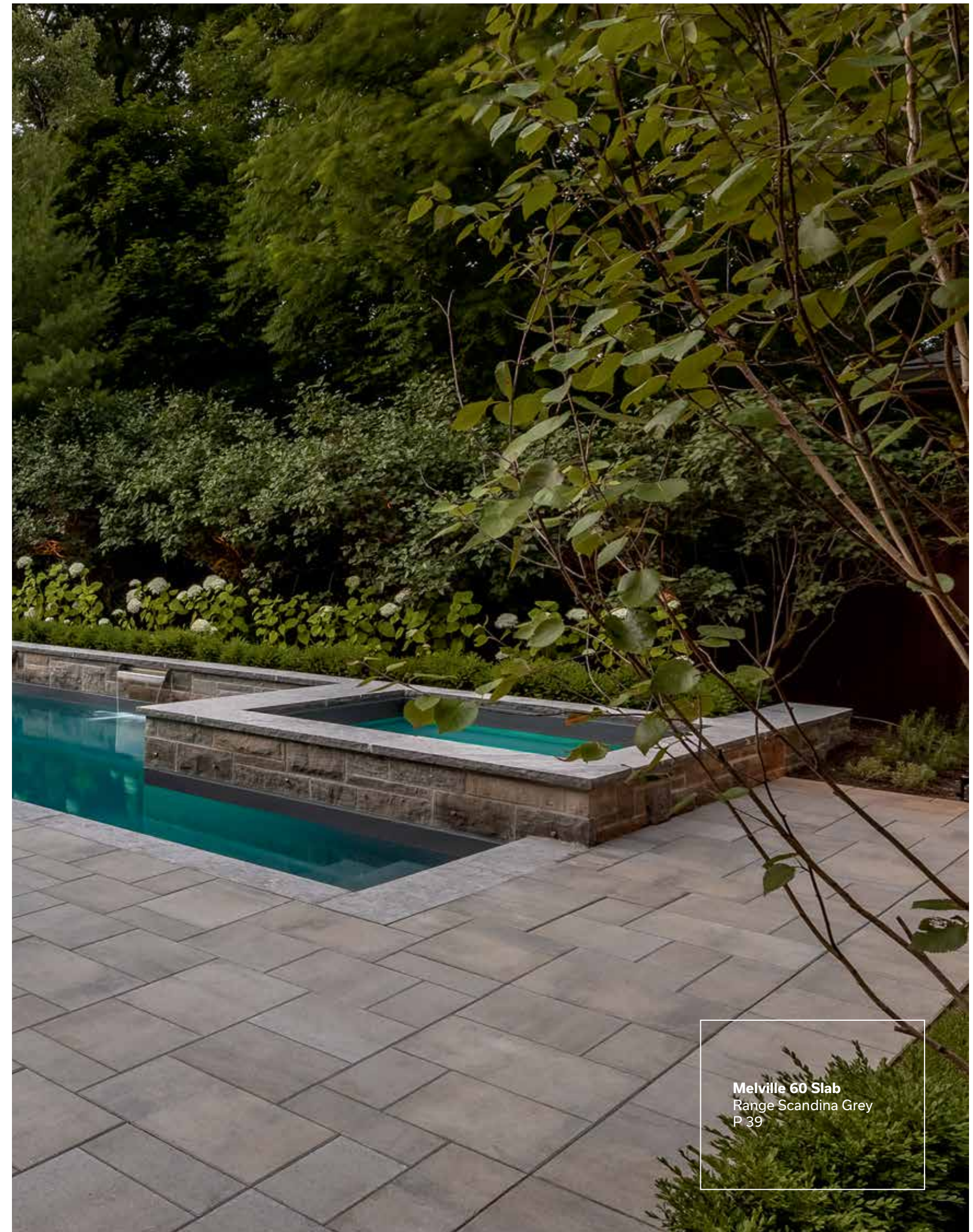


A landscape  
larger than life.



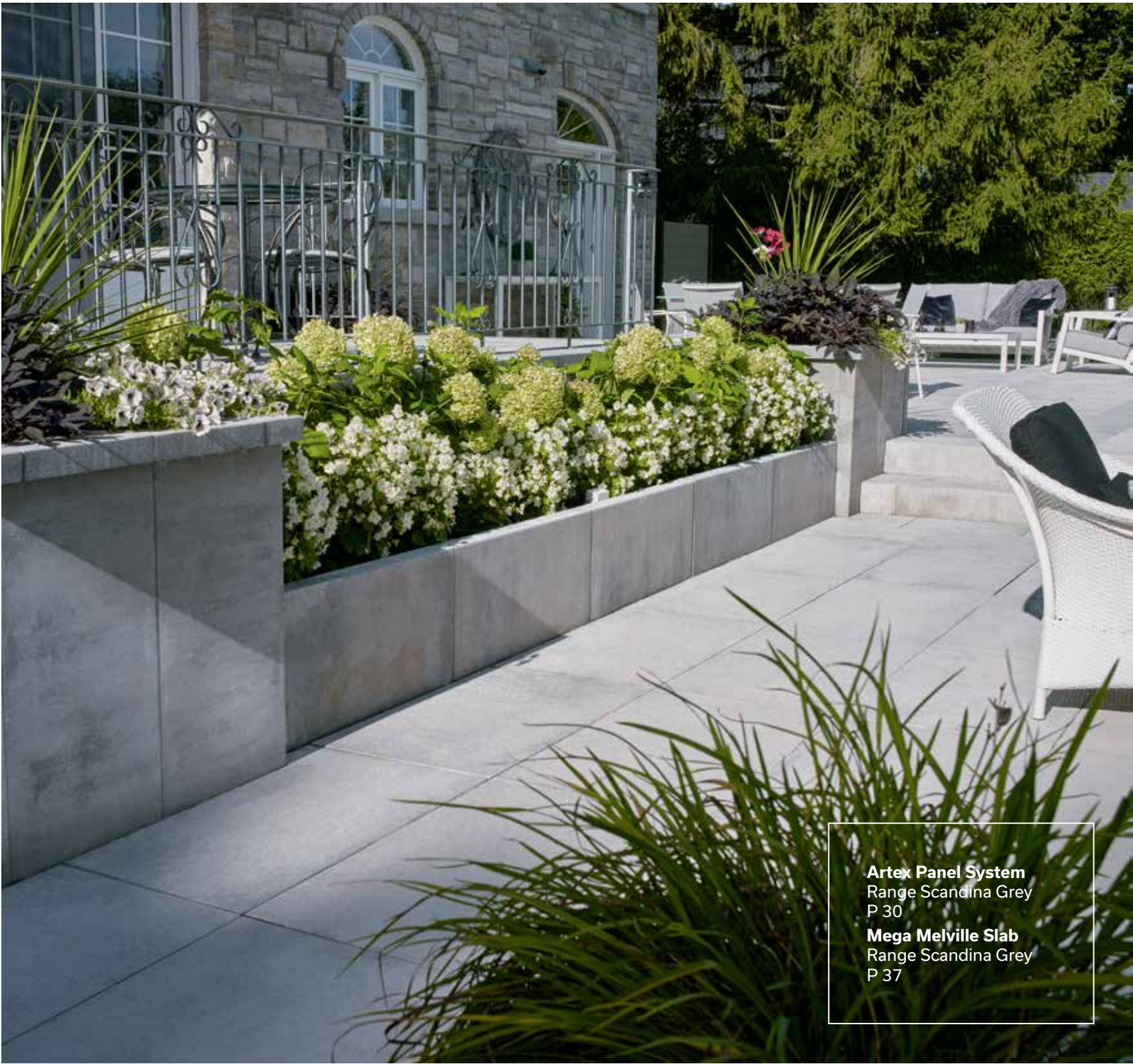
**Mega Melville Slab**  
Range Scandina Grey  
P 37



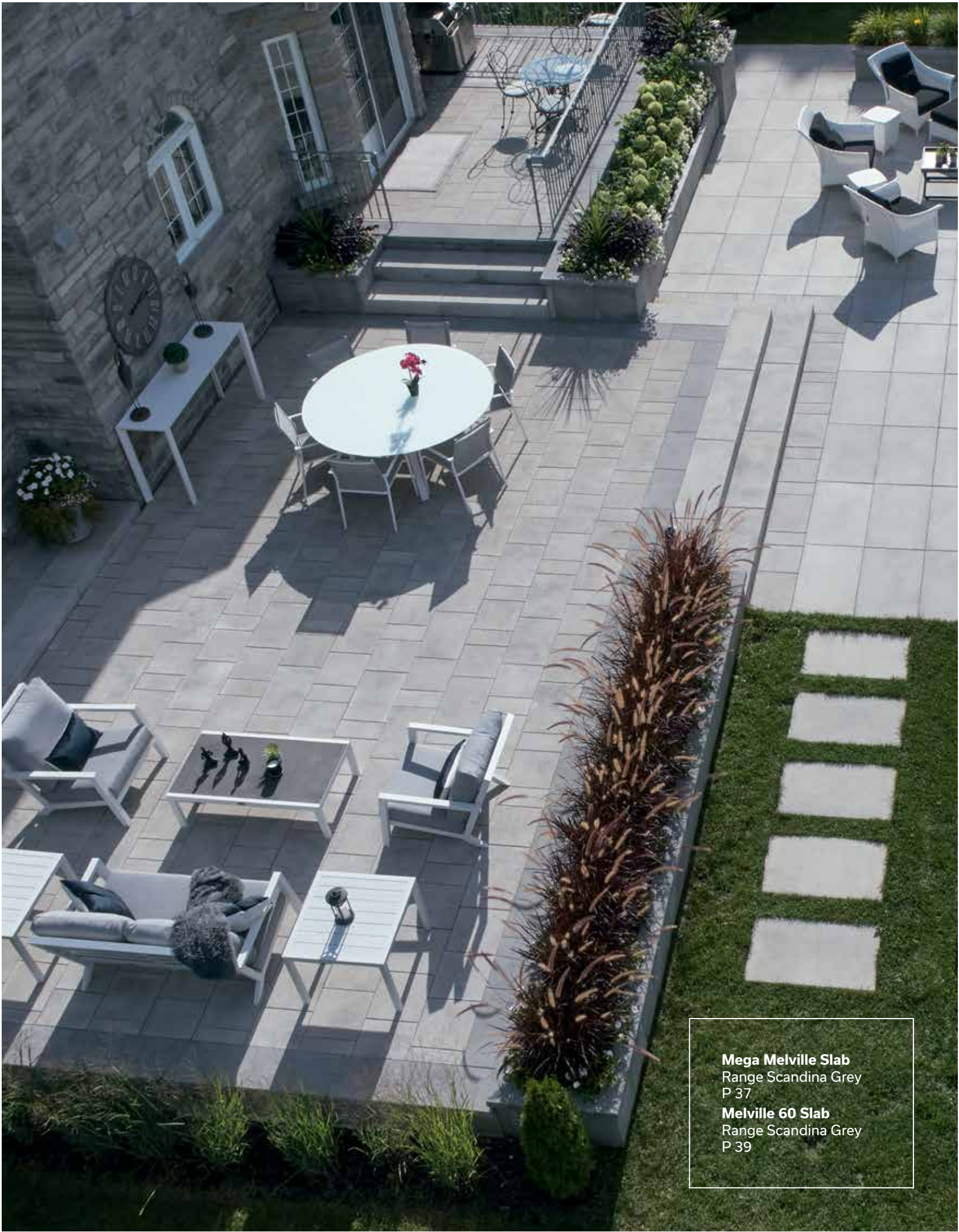


**Melville 60 Slab**  
Range Scandina Grey  
P 39





**Artex Panel System**  
Range Scandina Grey  
P 30  
**Mega Melville Slab**  
Range Scandina Grey  
P 37



**Mega Melville Slab**  
Range Scandina Grey  
P 37  
**Melville 60 Slab**  
Range Scandina Grey  
P 39

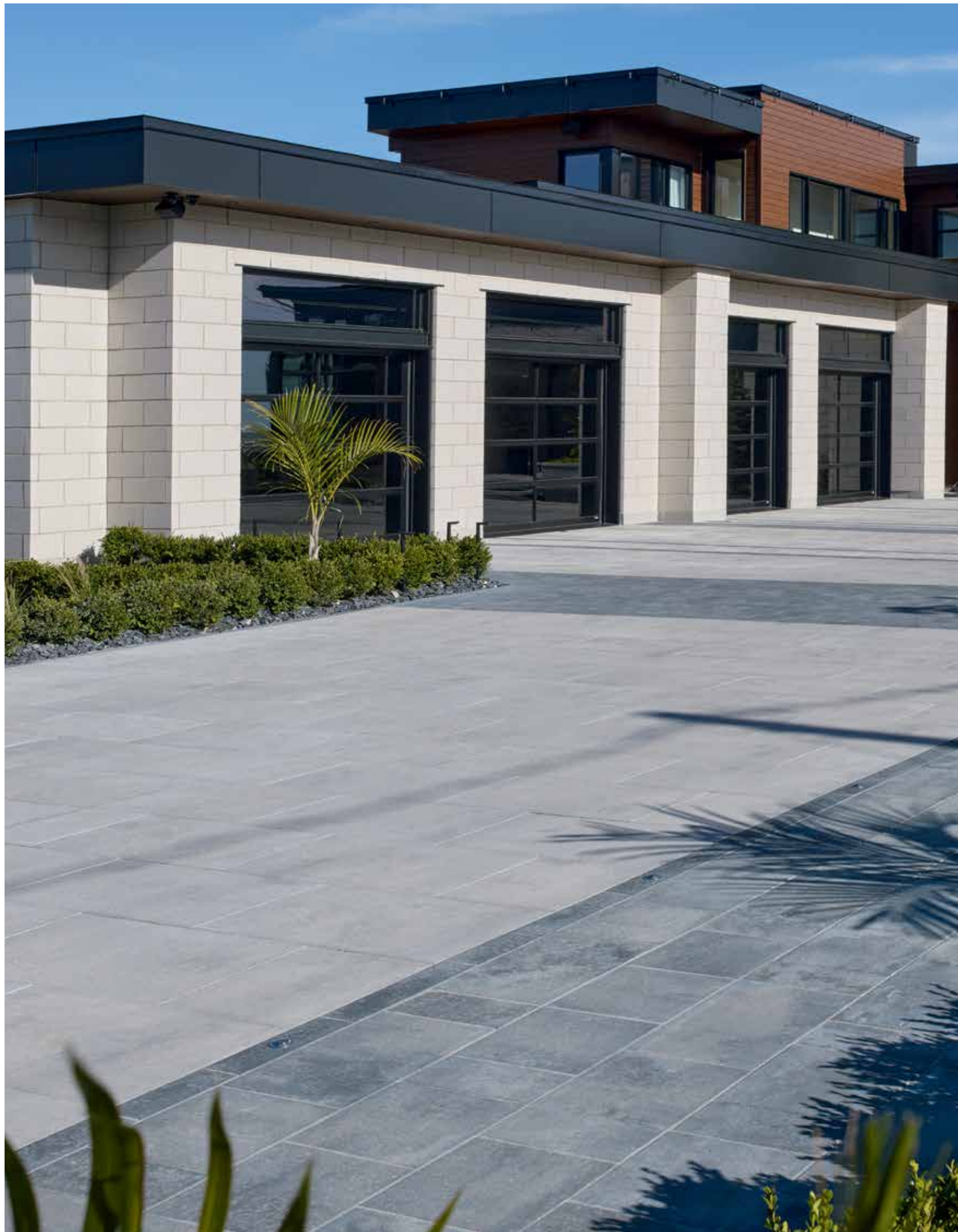


Tailored to  
your tastes.



**Mega Melville Paver**  
Range Bayona Grey  
P 53  
**Vendome 80 Paver**  
Rockland Black  
P 61









**Mondrian Plus 80 Paver**  
Range Norvick Grey  
P 59  
**Vendome 80 Paver**  
Rockland Black  
P 61





Whether smooth or textured, our landscaping products are offered in a range of finishes and colours. Designed for any application or spark of inspiration, our collections allow you to create your own universe.

smooth [≡]



With its timeless look and vibrant flair, our **smooth** product line offers sleek lines along with a rich monochromatic palette. A natural prestige for contemporary spaces.

textured [⋈]



The classic, authentic elegance of cut stone is brought to life through our **textured** products. Experience the charm and nobility of raw materials, offered in a variety of subtle and sophisticated tones.





Artex Panel System  
Range Scandina Grey  
P 30

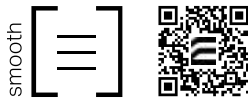


# Alternative Landscaping

30 Artex Panel System  
N 31 Orion Fireplace



# Artex Panel System



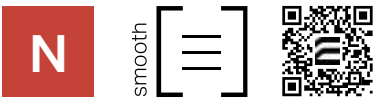
**18 x 36 Panel**  
76 mm x 457 mm x 914 mm  
3" x 18" x 36"

**6 x 36 Capping**  
76 mm x 152 mm x 914 mm  
3" x 6" x 36"



**Resources and inspirations**  
Download our Artex guide for a wealth of ideas.

# Orion Fireplace



**540 mm x 1016 mm x 1016 mm**  
21 3/16" x 40" x 40"

**Range Amber Beige**

**Range Scandina Grey**





**Mega Melville Slab**  
Range Scandina Grey  
P 37  
**Melville Plus Capping**  
Range Scandina Grey  
P 80



# Slabs

- 34 Cassara
- 35 City
- 36 Esbelto
- 37 Mega Melville
- 38 Melville 24 x 24
- 39 Melville 60
- 39 Melville 60 Small Rectangle
- 40 Melville 60 Textureguard
- 41 Metrik
- 42 Mondrian Plus 50
- 43 Mondrian Plus 60
- 43 Mondrian Plus 60 Small Rectangle
- 44 Rosebel
- N 45 Wilfrid



Cassara Slab



**Unit A**  
60 mm x 300 mm x 400 mm  
2 3/8" x 11 13/16" x 15 3/4"



**Large Rectangle**  
60 mm x 300 mm x 700 mm  
2 3/8" x 11 13/16" x 27 9/16"  
(Sold separately)



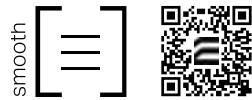
**Unit B**  
60 mm x 300 mm x 500 mm  
2 3/8" x 11 13/16" x 19 11/16"



**Unit C**  
60 mm x 300 mm x 600 mm  
2 3/8" x 11 13/16" x 23 5/8"

● Colour available in Large Rectangle only

City Slab



Cameo Beige



Alpine Grey



Sterling Grey



60 mm x 500 mm x 750 mm  
2 3/8" x 19 11/16" x 29 1/2"



Esbelto Slab



Esbelto Slab  
Silverstone



60 mm x 305 mm x 610 mm  
2 3/8" x 12" x 24"



Hickory



Marbella



Silverstone



Range Amber Beige



Range Scandina Grey

Mega Melville Slab



Mega Melville  
Slab  
Range Scandina  
Grey



60 mm x 570 mm x 950 mm  
2 3/8" x 22 7/16" x 37 3/8"



Range Amber Beige



Range Margaux Beige



Range Bayona Grey



Range Chambord Grey



Range Newport Grey



Range Shaded Grey



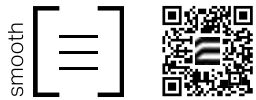
Range Scandina Grey



Rockland Black



Melville 24 x 24 Slab



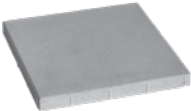
Blizzard



Range **Amber Beige**

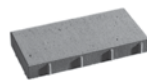
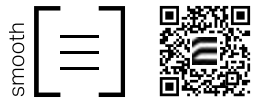


Range **Bayona Grey**

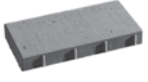


60 mm x 610 mm x 610 mm  
2 3/8" x 24" x 24"

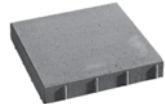
Melville 60 Slab



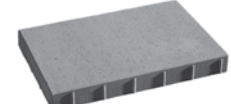
**Unit A**  
60 mm x 190 mm x 380 mm  
2 3/8" x 7 1/2" x 15"



**Small Rectangle**  
60 mm x 190 mm x 380 mm  
2 3/8" x 7 1/2" x 15"  
(Sold separately)



**Unit B**  
60 mm x 380 mm x 380 mm  
2 3/8" x 15" x 15"



**Unit C**  
60 mm x 380 mm x 570 mm  
2 3/8" x 15" x 22 7/16"

- Colours not available in Melville 60 Paver Small Rectangle
- Colour available in Melville 60 Paver Small Rectangle only



Range **Amber Beige**



Range **Margaux Beige**



Range **Bayona Grey**



Range **Chambord Grey**



Range **Newport Grey**



Range **Shaded Grey**



Range **Scandina Grey**



**Rockland Black**



# Melville 60 Textureguard Slab



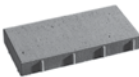
Hickory



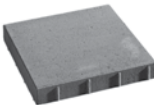
Marbella



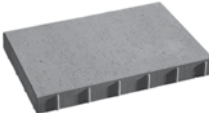
Silverstone



**Unit A**  
60 mm x 190 mm x 380 mm  
2 3/8" x 7 1/2" x 15"



**Unit B**  
60 mm x 380 mm x 380 mm  
2 3/8" x 15" x 15"

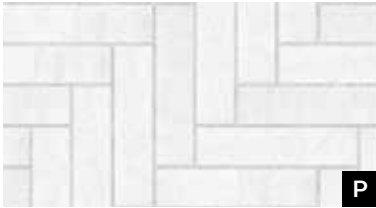
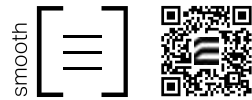


**Unit C**  
60 mm x 380 mm x 570 mm  
2 3/8" x 15" x 22 7/16"

Melville 60  
Textureguard  
Slab  
Silverstone



# Metrik Slab



Blizzard



Range Bayona Grey



Rockland Black



60 mm x 70 mm x 280 mm  
2 3/8" x 2 3/4" x 11"

Metrik Slab  
Rockland Black





# Mondrian Plus 50 Slab



Range **Margaux Beige**



Range **Newport Grey**



Range **Norvick Grey**



**Unit A**  
50 mm x 190 mm x 380 mm  
2" x 7 1/2" x 15"



**Unit B**  
50 mm x 380 mm x 380 mm  
2" x 15" x 15"



**Unit C**  
50 mm x 380 mm x 570 mm  
2" x 15" x 22 7/16"

# Mondrian Plus 60 Slab



**Unit A**  
60 mm x 165 mm x 330 mm  
2 3/8" x 6 1/2" x 13"



**Small Rectangle**  
60 mm x 165 mm x 330 mm  
2 3/8" x 6 1/2" x 13"  
(Sold separately)



**Unit B**  
60 mm x 330 mm x 330 mm  
2 3/8" x 13" x 13"



**Unit C**  
60 mm x 330 mm x 495 mm  
2 3/8" x 13" x 19 1/2"

● Colour available in Mondrian Plus 60 Paver Small Rectangle only



Range **Amboise Beige**



Range **Margaux Beige**



Range **Newport Grey**



Range **Norvick Grey**



Range **Scandina Grey**



**Rockland Black**



# Rosebel Slab



Rosebel Slab  
Range Amboise  
Beige



Unit A  
60 mm x 389 mm x 560 mm  
2 3/8" x 15 5/16" x 22"



Unit B  
60 mm x 389 mm x 756 mm  
2 3/8" x 15 5/16" x 29 3/4"



Range Amboise Beige



Range Margaux Beige

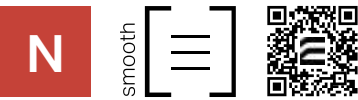


Range Newport Grey

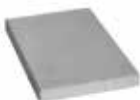


Range Norvick Grey

# Wilfrid Slab



Wilfrid Slab  
Range Scandina  
Grey



Unit A  
60 mm x 570 mm x 380 mm  
2 3/8" x 22 7/16" x 15"



Unit B  
60 mm x 570 mm x 570 mm  
2 3/8" x 22 7/16" x 22 7/16"



Range Amber Beige



Range Scandina Grey



Unit C  
60 mm x 570 mm x 950 mm  
2 3/8" x 22 7/16" x 37 3/8"



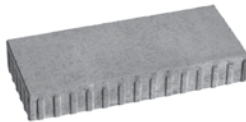
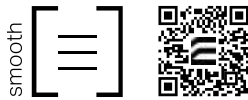
# Pavers

**Melville 80 Paver**  
Range Newport Grey  
P 54

- 48 Cassara Large Rectangle
- 49 Cassara Verde
- 50 Esbelto
- 51 Kensington Smooth
- 52 Kensington
- 53 Mega Melville
- 54 Melville 80
- 54 Melville 80 Small Rectangle
- 56 Melville 80 Textureguard
- 57 Melville Aqua
- 58 Melville Plank
- 59 Mondrian Plus 80
- 59 Mondrian Plus 80 Small Rectangle
- 60 Trafalgar 60
- 61 Vendome 60
- 61 Vendome 80
- N** 62 Virage
- N** 63 Zen



Cassara Large Rectangle Paver



100 mm x 300 mm x 700 mm  
4" x 11 13/16" x 27 9/16"



Range **Amber Beige**



Range **Shaded Grey**

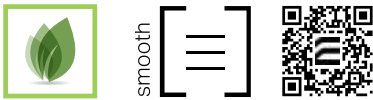


Range **Scandina Grey**



**Rockland Black**

Cassara Verde Paver



Range **Shaded Grey**



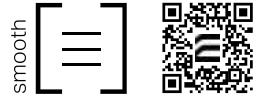
80 mm x 300 mm x 450 mm  
3 1/8" x 11 13/16" x 17 3/4"



Esbelto Paver



Esbelto Paver  
Silverstone



Hickory



Marbella



Silverstone



80 mm x 305 mm x 610 mm  
3 1/8" x 12" x 24"

Kensington Smooth Paver



Kensington  
Smooth Paver  
Ash Grey Blend



**Large Rectangle**  
80 mm x 279 mm x 419 mm  
3 7/48" x 10 47/48" x 16 1/2"



**Square**  
80 mm x 279 mm x 279 mm  
3 7/48" x 10 47/48" x 10 47/48"



**Small Rectangle**  
80 mm x 139 mm x 279 mm  
3 7/48" x 5 23/48" x 10 47/48"



**Rectangle**  
80 mm x 209 mm x 279 mm  
3 7/48" x 8 1/4" x 10 47/48"  
(Sold separately)

Sold in a Mixed Bundle (Large Rectangle, Square and Small Rectangle combined) suitable for mechanical installation.

● Colour available in Kensington Smooth Paver Rectangle only



Ash Grey Blend



Canyon Grey Blend



Desert Grey Blend



Granite Grey Blend



Sierra Black





# Kensington Paver





Kensington Paver  
Ash Grey Blend,  
Sierra Black insert

Icons: person, car, fire

- 

**Large Rectangle**  
80 mm x 279 mm x 419 mm  
3 7/48" x 10 47/48" x 16 1/2"
- 

**Square**  
80 mm x 279 mm x 279 mm  
3 7/48" x 10 47/48" x 10 47/48"
- 

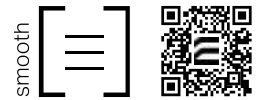
**Small Rectangle**  
80 mm x 139 mm x 279 mm  
3 7/48" x 5 23/48" x 10 47/48"
- 

**Rectangle**  
80 mm x 209 mm x 279 mm  
3 7/48" x 8 1/4" x 10 47/48"  
(Sold separately)

Sold in a Mixed Bundle (Large Rectangle, Square and Small Rectangle combined) suitable for mechanical installation.


● Colour available in Kensington Paver Rectangle only

# Mega Melville Paver



Mega Melville Paver  
Range Scandina Grey

Icons: person, car

  
80 mm x 570 mm x 950 mm  
3 1/8" x 22 7/16" x 37 3/8"

- 

Range **Amber Beige**
- 

Range **Margaux Beige**
- 

Range **Bayona Grey**
- 

Range **Chambord Grey**
- 

Range **Newport Grey**
- 

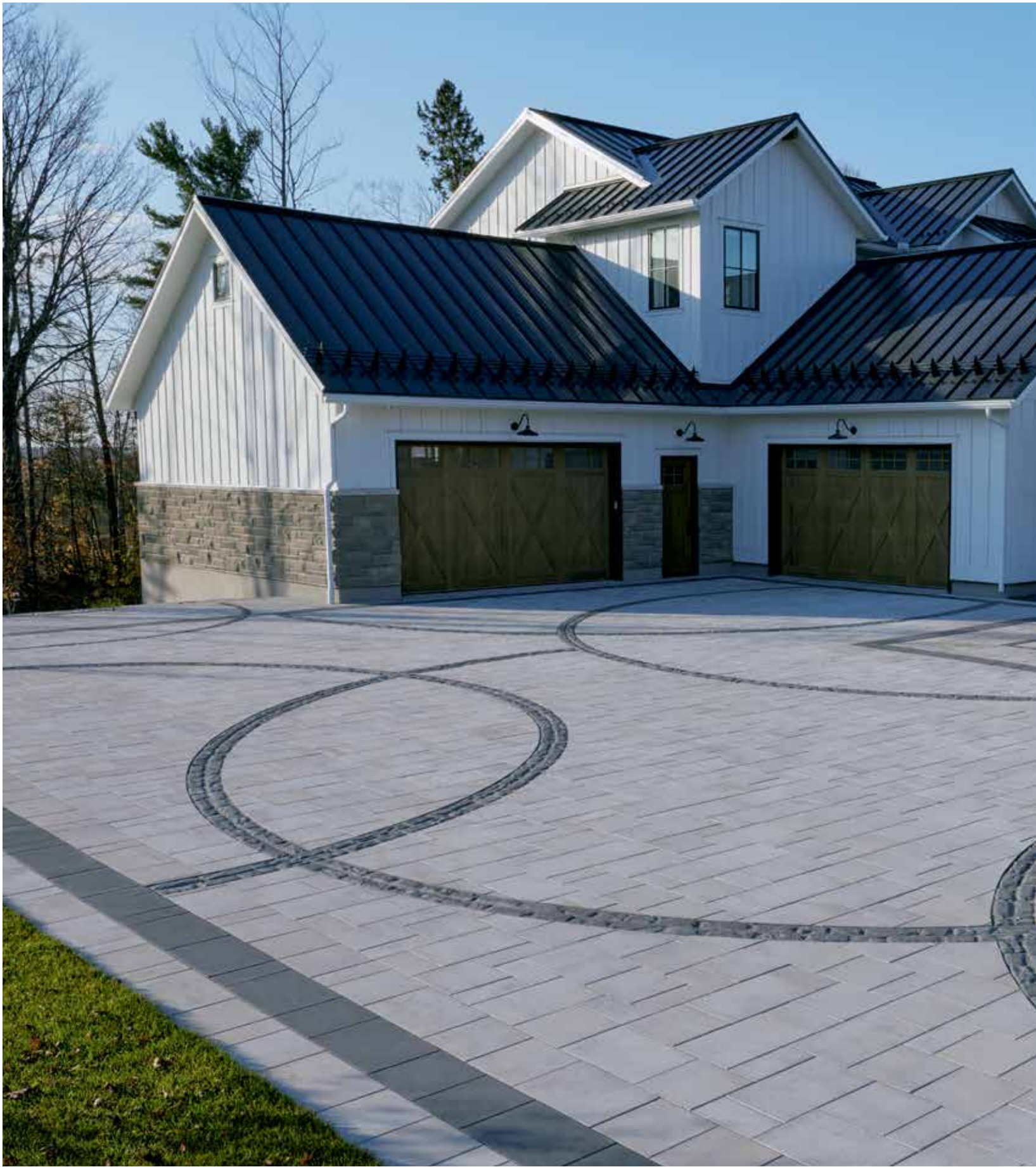
Range **Shaded Grey**
- 

Range **Scandina Grey**
- 


Range **Rockland Black**

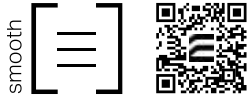


Melville 80 Paver



Melville 80  
Paver  
Range Scandina  
Grey



Range **Amber Beige**



Range **Margaux Beige**



Range **Bayona Grey**



Range **Chambord Grey**



Range **Newport Grey**





Range **Shaded Grey**



Range **Scandina Grey**



**Rockland Black**

-  Colours not available in Melville 80 Paver Small Rectangle
-  Colour available in Melville 80 Paver Small Rectangle only



**Unit A**  
80 mm x 190 mm x 380 mm  
3 1/8" x 7 1/2" x 15"



**Unit C**  
80 mm x 380 mm x 570 mm  
3 1/8" x 15" x 22 7/16"



**Unit B**  
80 mm x 380 mm x 380 mm  
3 1/8" x 15" x 15"





**Small Rectangle**  
80 mm x 190 mm x 380 mm  
3 1/8" x 7 1/2" x 15"  
(Sold separately)

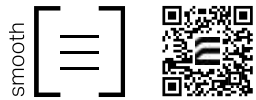


# Melville 80 Textureguard Paver



Melville 80  
Textureguard  
Paver  
Hickory



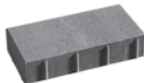
Hickory



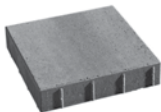
Marbella



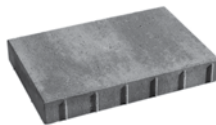
Silverstone



Unit A  
80 mm x 190 mm x 380 mm  
3 1/8" x 7 1/2" x 15"



Unit B  
80 mm x 380 mm x 380 mm  
3 1/8" x 15" x 15"





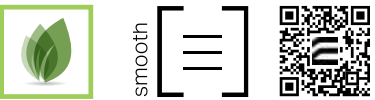
Unit C  
80 mm x 380 mm x 570 mm  
3 1/8" x 15" x 22 7/16"

# Melville Aqua Paver

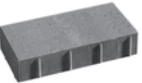


Melville Aqua  
Paver  
Range Scandina  
Grey

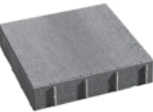
  



Range Scandina Grey



Unit A  
80 mm x 190 mm x 380 mm  
3 1/8" x 7 1/2" x 15"



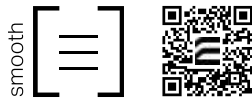
Unit B  
80 mm x 380 mm x 380 mm  
3 1/8" x 15" x 15"



Unit C  
80 mm x 380 mm x 570 mm  
3 1/8" x 15" x 22 7/16"



Melville Plank Paver



Range **Newport Grey**



Range **Scandina Grey**



**Rockland Black**

Visit [permacon.ca](http://permacon.ca) for all available sizes



**SLIM - Units A, B and C**  
80 mm x 127 mm x 300 mm - 500 mm  
3 1/8" x 5" x 11 13/16" - 19 11/16"



**LARGE - Units A, B and C**  
80 mm x 190 mm x 300 - 500 mm  
3 1/8" x 7 1/2" x 11 13/16" - 19 11/16"

Mondrian Plus 80 Paver



**Unit A**  
80 mm x 165 mm x 330 mm  
3 1/8" x 6 1/2" x 13"



**Small Rectangle**  
80 mm x 165 mm x 330 mm  
3 1/8" x 6 1/2" x 13"  
(Sold separately)



**Unit B**  
80 mm x 330 mm x 330 mm  
3 1/8" x 13" x 13"



**Unit C**  
80 mm x 330 mm x 495 mm  
3 1/8" x 13" x 19 1/2"

● Colour available in Mondrian Plus 80 Paver Small Rectangle only



Range **Amboise Beige**



Range **Margaux Beige**



Range **Newport Grey**



Range **Norvick Grey**



Range **Scandina Grey**



**Rockland Black**



# Trafalgar 60 Paver



Range **Margaux Beige**



Range **Newport Grey**



Range **Norvick Grey**



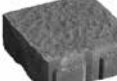
**Unit A**  
60 mm x 100 mm x 200 mm  
2 3/8" x 3 15/16" x 7 7/8"



**Unit B**  
60 mm x 200 mm x 200 mm  
2 3/8" x 7 7/8" x 7 7/8"



**Unit C**  
60 mm x 200 mm x 300 mm  
2 3/8" x 7 7/8" x 11 13/16"



**Large Square**  
60 mm x 300 mm x 300 mm  
2 3/8" x 11 13/16" x 11 13/16"  
(Sold separately)

# Vendome 60 and 80 Paver



**60 - Unit A**  
60 mm x 130 mm x 197 mm  
2 3/8" x 5 1/8" x 7 3/4"



**60 - Unit B**  
60 mm x 130 mm x 262 mm  
2 3/8" x 5 1/8" x 10 5/16"



**60 - Unit C**  
60 mm x 130 mm x 327 mm  
2 3/8" x 5 1/8" x 12 7/8"



**80 - Unit A**  
80 mm x 130 mm x 197 mm  
3 1/8" x 5 1/8" x 7 3/4"



**80 - Unit B**  
80 mm x 130 mm x 262 mm  
3 1/8" x 5 1/8" x 10 5/16"



**80 - Unit C**  
80 mm x 130 mm x 327 mm  
3 1/8" x 5 1/8" x 12 7/8"



Range **Margaux Beige**



Range **Newport Grey**



**Rockland Black**

Vendome 60 Pavers are not vehicular



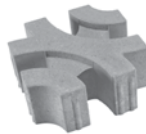
Virage Paver



Virage Paver  
Range Scandina  
Grey



Range Scandina Grey



80 mm x 300 mm x 300 mm  
3 1/8" x 11 7/8" x 11 7/8"

Zen Paver



Zen Paver  
Range Scandina  
Grey



80 mm x 190 mm x 380 mm  
3 1/8" x 7 1/2" x 15"



Range Amber Beige

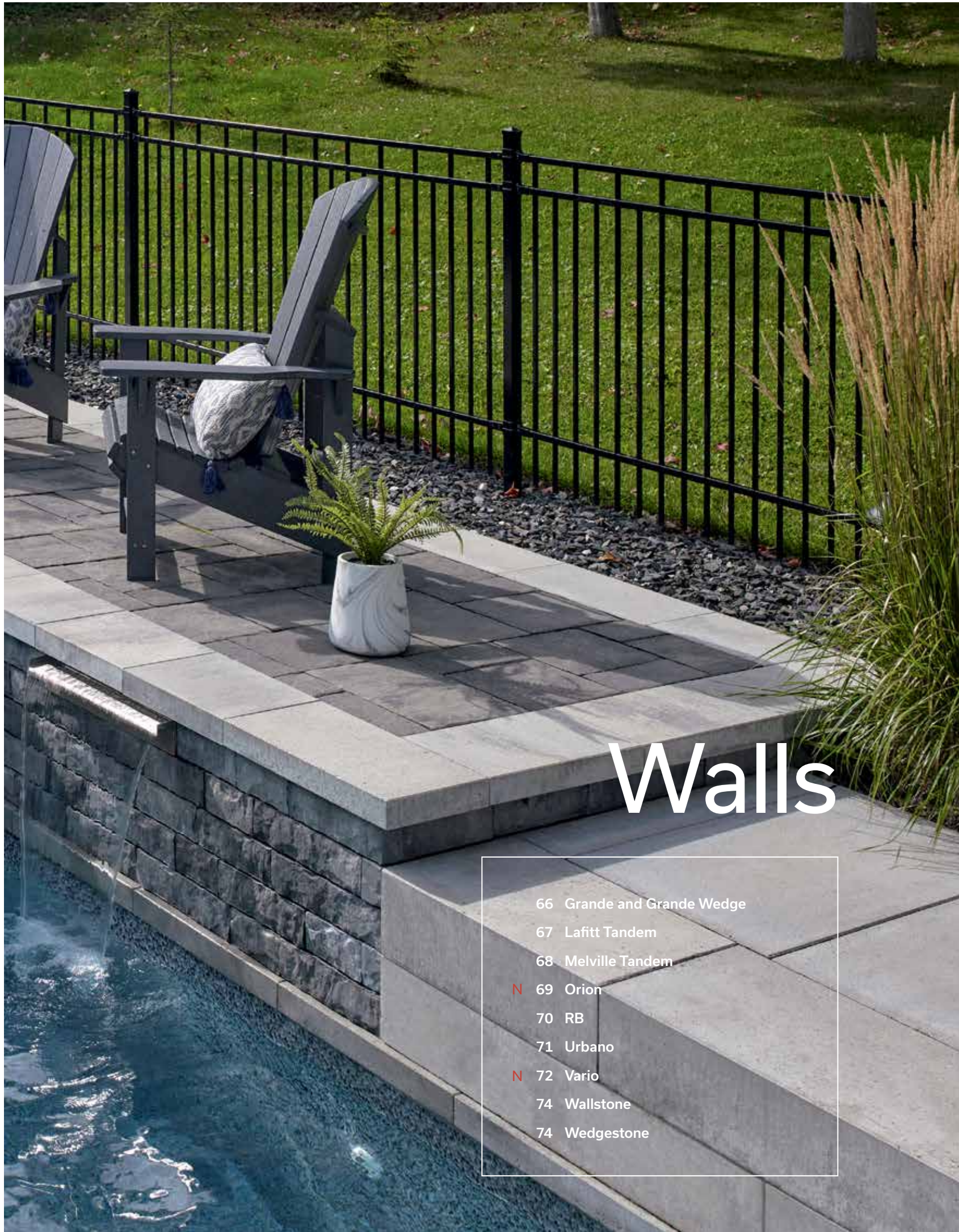


Range Scandina Grey





**Lafitt Tandem Wall**  
Range Newport Grey  
P 67

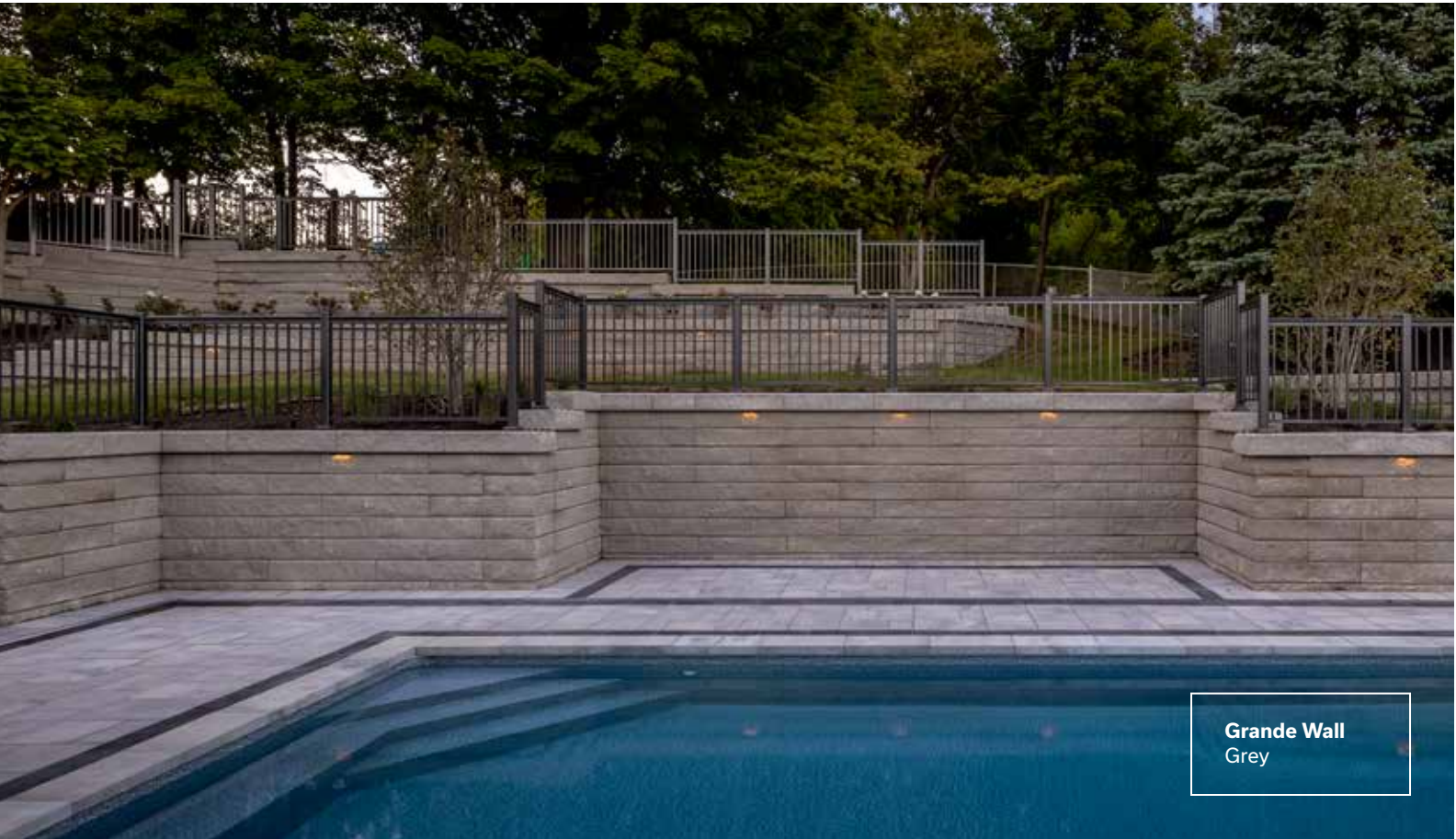


# Walls

- 66 Grande and Grande Wedge
- 67 Lafitt Tandem
- 68 Melville Tandem
- N 69 Orion
- 70 RB
- 71 Urbano
- N 72 Vario
- 74 Wallstone
- 74 Wedgestone



# Grande and Grande Wedge Wall



Grande Wall  
Grey

## GRANDE



**375 Standard**  
200 mm x 375 mm x 1000 mm  
7 7/8" x 14 3/4" x 39 3/8"



**1125 Standard**  
200 mm x 1125 mm x 1000 mm  
7 7/8" x 44 7/24" x 39 3/8"



**Corner Unit**  
200 mm x 500 mm x 1000 mm  
7 7/8" x 19 11/16" x 39 3/8"



Onyx Brown



**750 Standard**  
200 mm x 750 mm x 1000 mm  
7 7/8" x 29 25/48" x 39 3/8"



**175 Step**  
175 mm x 438 mm x 1000 mm  
6 43/48" x 17 1/4" x 39 3/8"



**438 Capping**  
200 mm x 438 mm x 1000 mm  
7 7/8" x 17 1/4" x 39 3/8"



Granite

## GRANDE WEDGE



**Standard**  
200 mm x 312.5 mm x 380/250 mm  
7 7/8" x 12 5/16" x 14 15/16" - 9 7/8"



**Capping**  
100 mm x 312.5 mm x 380/250 mm  
3 15/16" x 12 5/16" x 14 15/16" - 9 7/8"

Available in 438 Capping and 175 Step only  
Custom colours available



Grey



Desert Grey

# Lafitt Tandem Wall



Lafitt Tandem  
Wall  
Range Scandinavia  
Grey



**90 - Units A, B, C and D**  
90 mm x 67 mm x 201 mm - 402 mm  
3 9/16" x 2 5/8" x 7 7/8" - 15 13/16"



**180 - Units E, F and G**  
180 mm x 67 mm x 335 mm - 469 mm  
7 1/16" x 2 5/8" x 13 3/16" - 18 1/2"

Visit [permacon.ca](http://permacon.ca) for all available sizes



Range Amboise Beige



Range Margaux Beige



Range Newport Grey



Range Scandinavia Grey



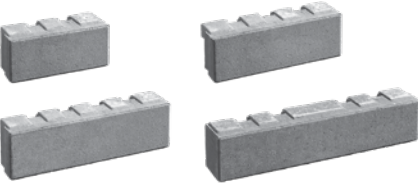
Rockland Black



# Melville Tandem Wall



Melville Tandem Wall  
Range Scandina Grey



**90 - Units A, B, C and D**  
90 mm x 67 mm x 201 mm - 402 mm  
3 9/16" x 2 5/8" x 7 7/8" - 15 13/16"



**180 - Units E, F and G**  
180 mm x 67 mm x 335 mm - 469 mm  
7 1/16" x 2 5/8" x 13 3/16" - 18 1/2"

Visit [permacon.ca](http://permacon.ca) for all available sizes



Range **Amber Beige**



Range **Margaux Beige**



Range **Newport Grey**



Range **Shaded Grey**



Range **Scandina Grey**



**Rockland Black**

# Orion Wall



Orion Wall  
Range Scandina Grey



180 mm x 203 mm x 813 mm  
7 1/16" x 8" x 32"



Range **Amber Beige**



Range **Scandina Grey**



RB Wall



RB Wall Granite Blend



**Regular unit**  
150 mm x 300 mm x 200 mm  
5 22/24" x 11 13/16" x 7 7/8"  
(Sold separately)



**Corner**  
150 mm x 300 mm x 200 mm  
5 22/24" x 11 13/16" x 7 7/8"  
(Sold separately)



**Capping**  
75 mm x 300 mm x 610 mm  
2 23/24" x 11 13/16" x 24 1/48"  
(Sold separately)



Desert Grey Blend



Granite Blend



Natural



Sierra Black

Urbano Wall



Urbano Wall  
Range Scandina  
Grey



Range Amber Beige



Range Shaded Grey



Range Scandina Grey



**Unit A**  
120 mm x 201 mm x 335 mm  
4 3/4" x 7 15/16" x 13 3/16"



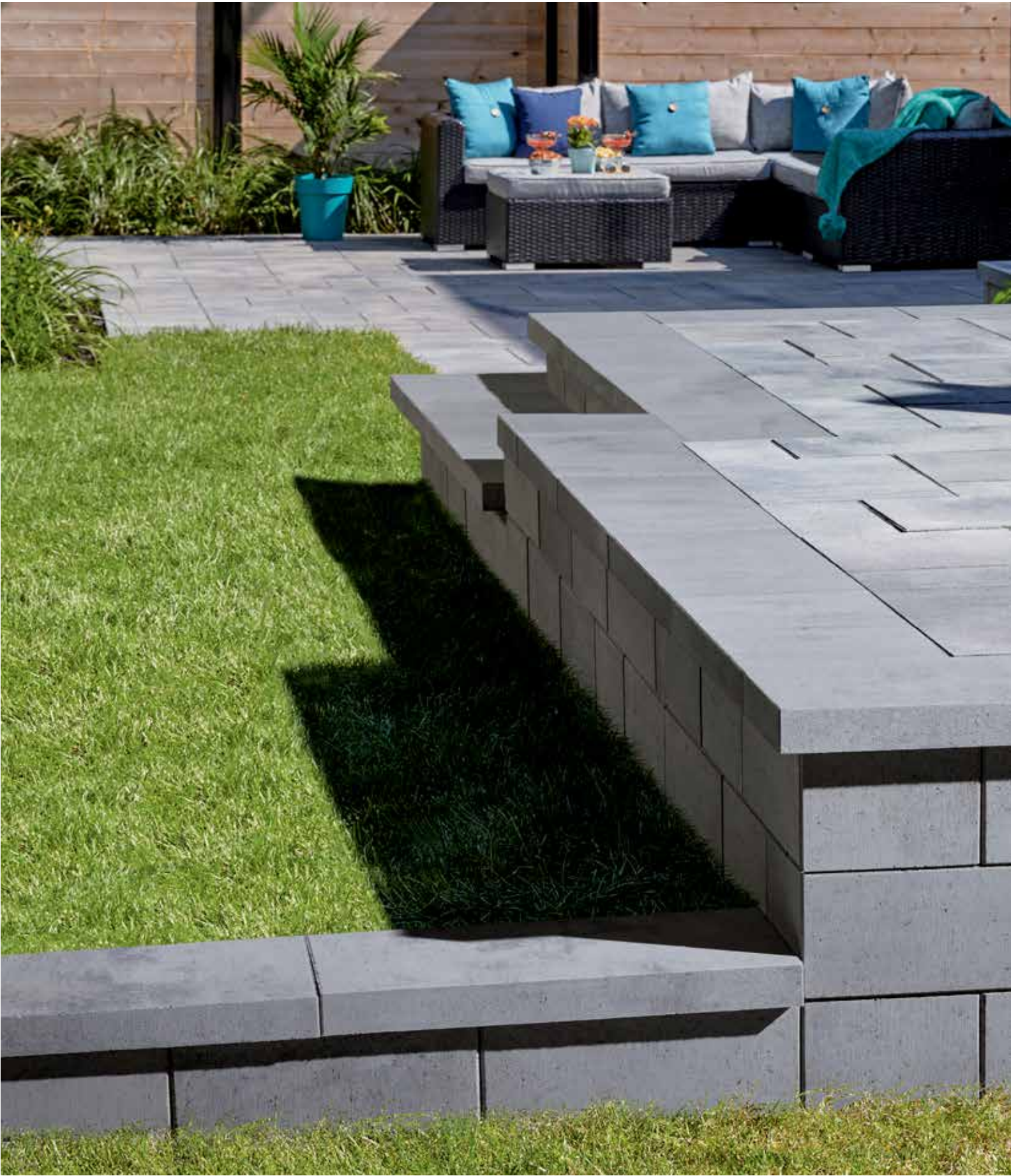
**Unit B**  
120 mm x 201 mm x 402 mm  
4 3/4" x 7 15/16" x 15 13/16"



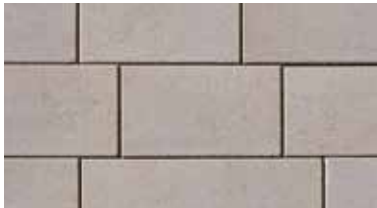
**Unit C**  
120 mm x 201 mm x 469 mm  
4 3/4" x 7 15/16" x 18 1/2"



Vario Wall



Vario Wall  
Range Scandina  
Grey



Range **Amber Beige**



Range **Newport Grey**



Range **Scandina Grey**



**90 - Unit A**  
90 mm x 238 mm x 317,5 mm  
3 9/16" x 9 3/8" x 12 1/2"



**180 - Unit A**  
180 mm x 238 mm x 317,5 mm  
7" x 9 3/8" x 12 1/2"



**90 - Unit B**  
90 mm x 238 mm x 397 mm  
3 9/16" x 9 3/8" x 15 5/8"



**180 - Unit B**  
180 mm x 238 mm x 397 mm  
7" x 9 3/8" x 15 5/8"



**90 - Unit C**  
90 mm x 238 mm x 476,5 mm  
3 9/16" x 9 3/8" x 18 3/4"



**180 - Unit C**  
180 mm x 238 mm x 476,5 mm  
7" x 9 3/8" x 18 3/4"



Wallstone Wall



Wallstone Wall  
Granite Blend



**Standard unit**  
100 mm x 200 mm x 300 mm  
3 15/16" x 7 7/8" x 11 13/16"



**Corner/Column unit**  
100 mm x 200 mm x 300 mm  
3 15/16" x 7 7/8" x 11 13/16"



**12 in. Capping**  
100 mm x 200 mm x 300 mm  
3 15/16" x 7 7/8" x 11 13/16"



Desert Grey Blend



Granite Blend

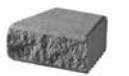
Wedgestone Wall



Wedgestone Wall  
Desert Grey Blend



**Standard unit**  
100 mm x 200 mm x 231 mm -  
153 mm  
3 15/16" x 7 7/8" x 9 1/16" - 6"



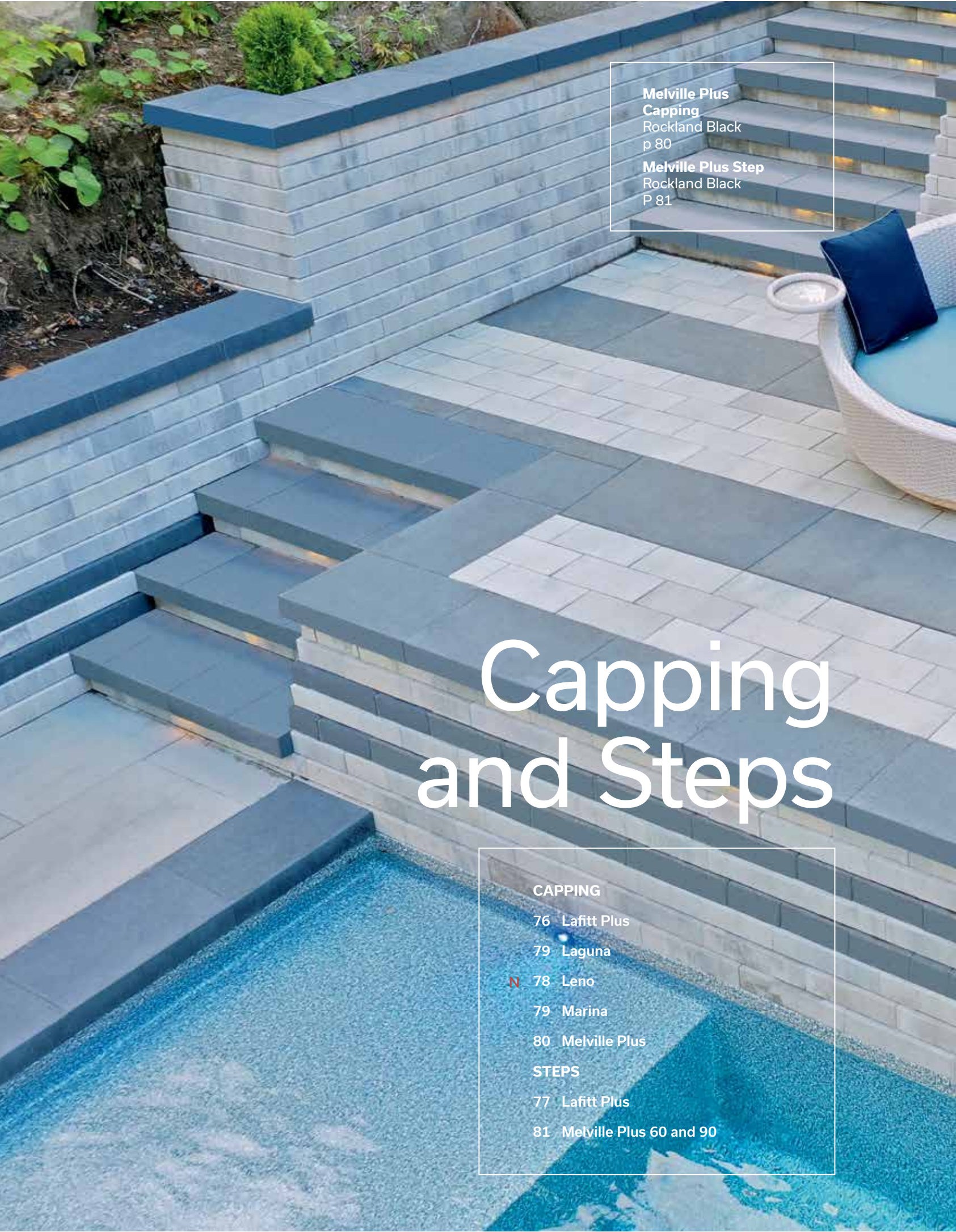
**Capping unit**  
100 mm x 200 mm x 231 mm -  
153 mm  
3 15/16" x 7 7/8" x 9 1/16" - 6"



Desert Grey Blend



Granite Blend



**Melville Plus Capping**  
Rockland Black  
p 80  
**Melville Plus Step**  
Rockland Black  
P 81

Capping  
and Steps

- CAPPING**
- 76 Lafitt Plus
  - 79 Laguna
  - 78 Leno
  - 79 Marina
  - 80 Melville Plus
- STEPS**
- 77 Lafitt Plus
  - 81 Melville Plus 60 and 90



# Lafitt Plus Capping



Lafitt Plus Capping  
Range Scandinia Grey



90 mm x 305 mm x 400 mm  
3 9/16" x 12" x 15 3/4"



Range **Amboise Beige**



Range **Margaux Beige**



Range **Newport Grey**



Range **Scandinia Grey**



**Rockland Black**

# Lafitt Plus Step



Lafitt Plus Step  
Range Margaux Beige



90 mm x 400 mm x 400 mm  
3 9/16" x 15 3/4" x 15 3/4"



Range **Margaux Beige**



Range **Newport Grey**



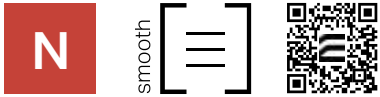
Range **Scandinia Grey**



**Rockland Black**



Leno Capping



Leno Capping  
Range Scandina  
Grey



60 mm x 305 mm x 915 mm  
2 3/8" x 12" x 36"



Range **Shaded Grey**

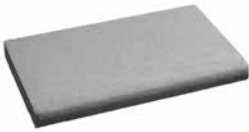
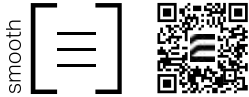


Range **Scandina Grey**



**Rockland Black**

Laguna Pool Capping



60 mm x 360 mm x 610 mm  
2 3/8" x 14 3/16" x 24"



**Alpine Grey**



**Sterling Grey**

Marina Capping



60 mm x 150 mm x 300 mm  
2 3/8" x 5 15/16" x 11 13/16"



Range **Norvick Grey**



**Rockland Black**



# Melville Plus Capping



Melville Plus Capping  
Range Scandina Grey



60 mm x 305 mm x 600 mm  
2 3/8" x 12" x 23 5/8"



Range **Amber Beige**



Range **Margaux Beige**



Range **Newport Grey**



Range **Shaded Grey**



Range **Scandina Grey**



**Rockland Black**

# Melville Plus 60 and 90 Steps



Melville Plus 90 Step  
Rockland Black



**Unit 60**  
60 mm x 400 mm x 600 mm  
2 3/8" x 15 3/4" x 23 5/8"  
(Sold separately)



**Unit 90**  
90 mm x 400 mm x 600 mm  
3 9/16" x 15 3/4" x 23 5/8"  
(Sold separately)

Colours available in Melville Plus 90 Step only



Range **Amber Beige**



Range **Margaux Beige**



Range **Newport Grey**



Range **Shaded Grey**



Range **Scandina Grey**



**Rockland Black**





**Mega Melville Plus Step**  
Rockland Black  
P 85

**Artex Panel System**  
Range Shaded Grey  
P 30



# Mega Steps

- 84 Mega Lafitt Plus
- 85 Mega Melville Plus
- 86 Valentia



Mega Lafitt Plus Step



Mega Lafitt Plus Step  
Rockland Black



Range Margaux Beige



Range Newport Grey



Rockland Black



180 mm x 406 mm x 1219 mm  
7 1/16" x 16" x 48"

Mega Melville Plus Step



Mega Melville Plus Step  
Range Scandina Grey



180 mm x 406 mm x 1219 mm  
7 1/16" x 16" x 48"



Range Amber Beige



Range Newport Grey



Range Shaded Grey



Range Scandina Grey



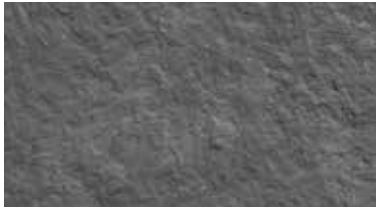
Rockland Black



Valentia Step



Valentia Step  
Sierra Black



Sierra Black



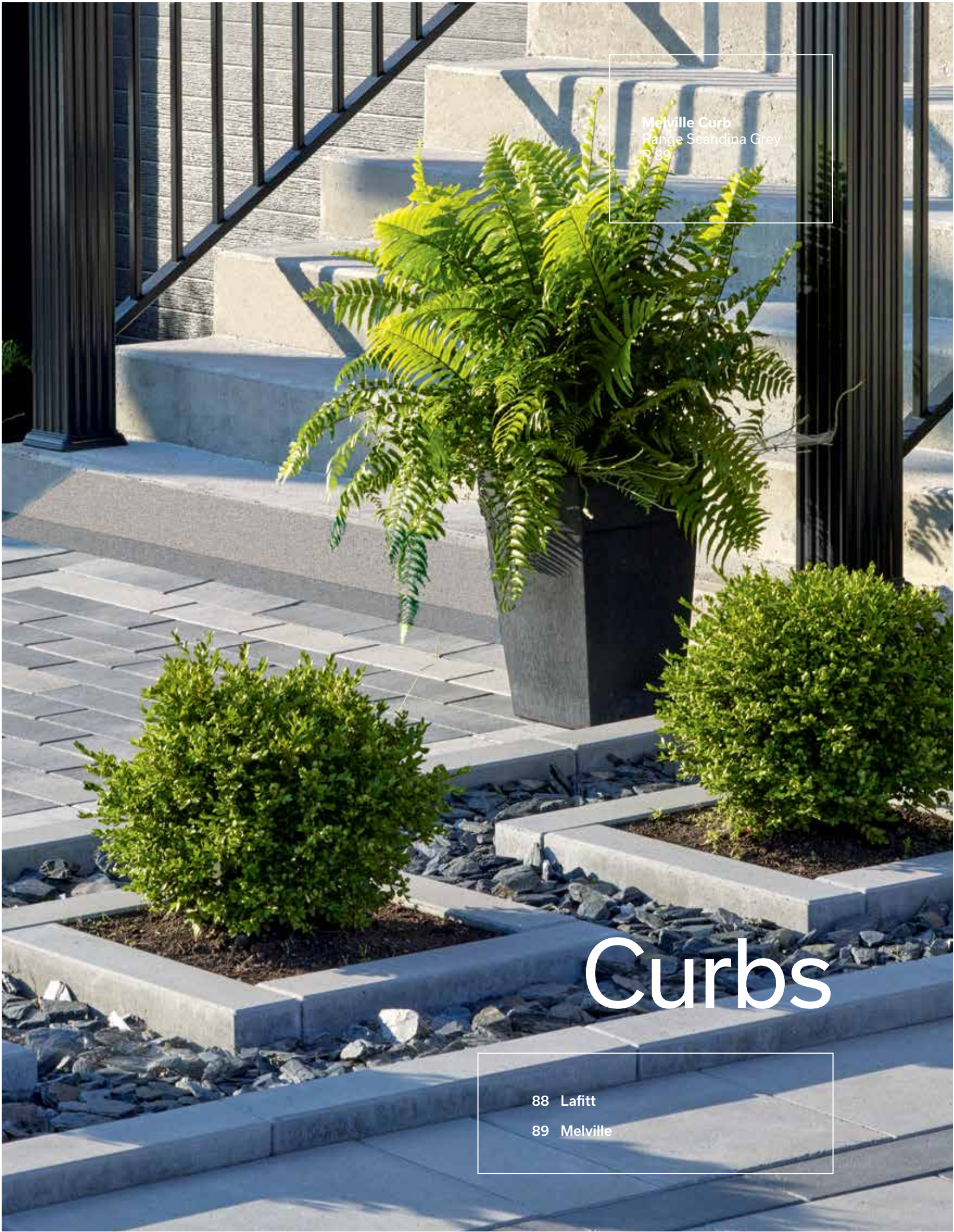
Sorrento



Step  
175 mm x 350 mm x 1200 mm  
6 43/48" x 13 37/48" x 47 1/4"



Terrace Step  
150 mm x 500 mm x 1500 mm  
5 22/24" x 19 11/16" x 59 1/16"



Melville Curb  
Range Scandina Grey  
P 89

88 Lafitt  
89 Melville



Lafitt Curb



Lafitt Curb  
Range Newport  
Grey



Range Margaux Beige



Range Newport Grey



Rockland Black



125 mm x 115 mm x 600 mm  
4 7/8" x 4 1/2" x 23 5/8"

Melville Curb



Melville Curb  
Range Amber  
Beige



Range Amber Beige



Range Shaded Grey



Range Scandina Grey



Rockland Black



125 mm x 115 mm x 600 mm  
4 7/8" x 4 1/2" x 23 5/8"





# Elements

- 91 Fireplace
- 91 Wood Boxes
- 91 Grill Island
- 91 Brick Oven

## Bordeaux



Sienna

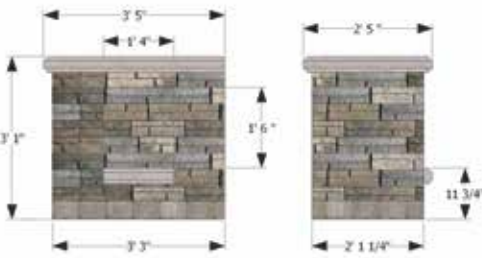


Capping

## Bordeaux Fireplace



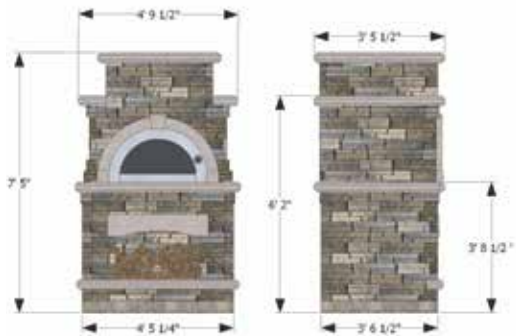
## Bordeaux Wood Boxes



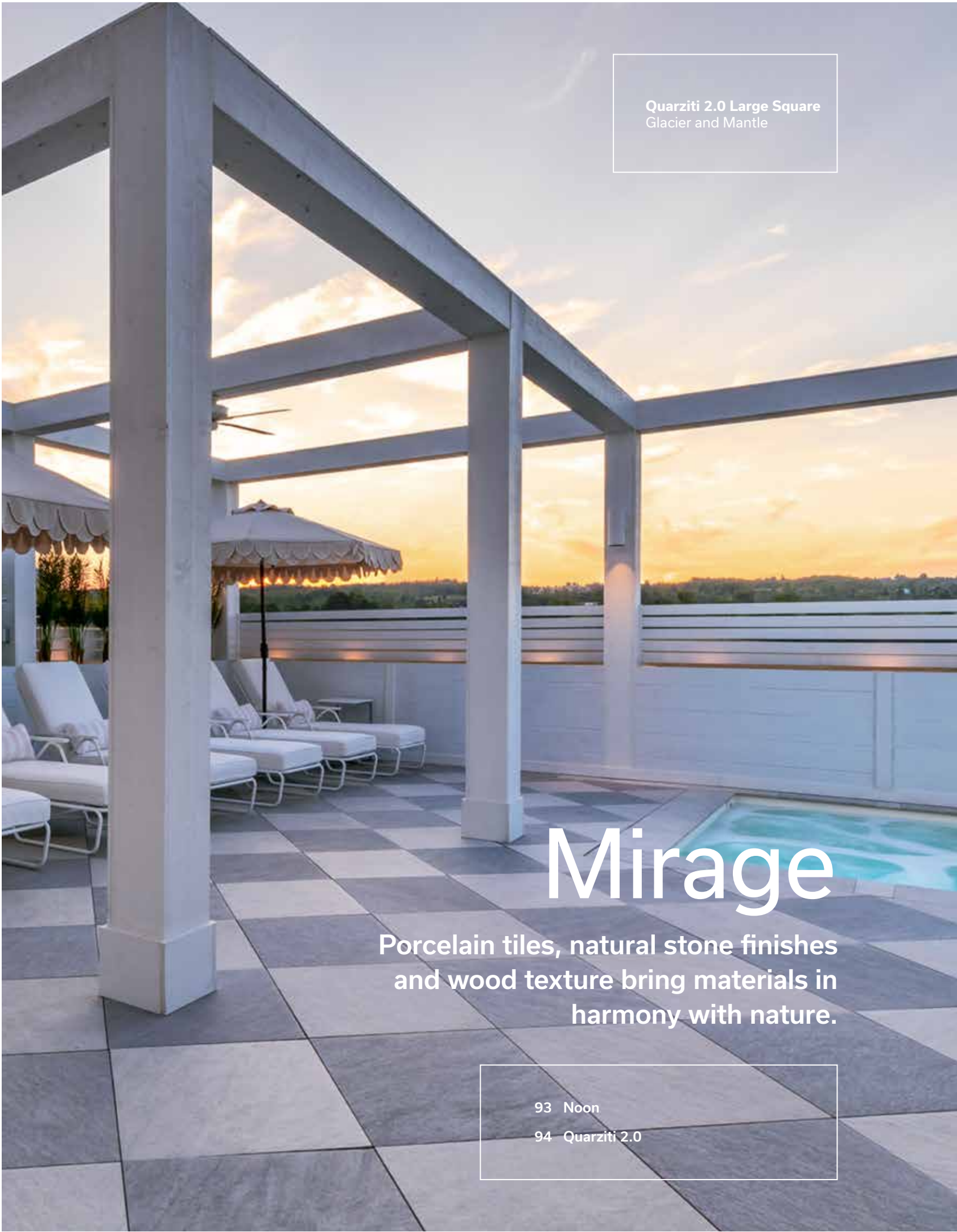
## Bordeaux Grill Island



## Bordeaux Brick Oven







Quarziti 2.0 Large Square  
Glacier and Mantle

# Mirage

Porcelain tiles, natural stone finishes  
and wood texture bring materials in  
harmony with nature.

- 93 Noon
- 94 Quarziti 2.0

## NOON Porcelain Tiles



Noon  
Daylight



Daylight



Ember



20 mm x 300 mm x 1200 mm  
3/4" x 11 13/16" x 47 1/4"



# Quarziti 2.0 Porcelain Tiles



Quarziti 2.0  
Large Square  
Waterfall



**Large Rectangle**  
20 mm x 600 mm x 1200 mm  
3/4" x 23 5/8" x 47 1/4"  
(Sold separately)



**Large Square**  
20 mm x 600 mm x 600 mm  
3/4" x 23 5/8" x 23 5/8"  
(Sold separately)



**Pool Capping**  
20 mm x 330 mm x 600 mm  
3/4" x 13" x 23 5/8"  
(Sold separately)



**Glacier**



**Mantle**



**Waterfall**



## Install with confidence

Every paver installation starts with the right choice of jointing sand!

Exclusive to Techniseal, the NextGel technology makes both HP NextGel and SmartSand easier to spread, faster to activate, and cleaner to install.

HP NextGel provides paver installations with superior durability and greater stability than any comparable product on the market.

## POLYMERIC SANDS



**SMARTSAND®**  
with NextGel TECHNOLOGY

- Ideal for residential projects, requires mechanical compaction
- Designed for optimal jointing of interlocking pavers
- Ideal for narrow joints 1/16 in. - 1 in. wide
- For pedestrian and low-traffic areas such as driveways, walkways, patios, etc.



**HP NextGel**

- For residential, commercial, industrial and public projects where mechanical compaction is possible and/or mandatory
- Ideal for concrete, wet-cast, textured or clay pavers and porcelain tiles (only if mechanical compaction is possible)
- For false joints
- Ideal for joints 1/16 in. - 2 in. wide
- For high-humidity areas, heavy-sloped and high-traffic areas



Tan



Urban

HP NextGel and SmartSand are offered in **Tan** or **Urban** by Permacon. Other colours are available; to learn more, visit Techniseal's official website at [techniseal.com](http://techniseal.com)



# 50 Year Warranty

## Landscape Products



Permacon's 50-year warranty applies to landscape and masonry products including Suretouch intended for residential use<sup>1</sup>. This warranty statement affirms that products manufactured by Permacon meet the requirements of the CSA (Canadian Standard Association) and ASTM (American Society for Testing and Materials) standards.

*For details regarding commercial applications, please refer to our institutional, commercial and industrial warranty.*

Permacon guarantees that, as of the date of delivery, our concrete products are free from manufacturing defects. Provided that the conditions set forth below are met, Permacon guarantees the structural integrity of the concrete in its landscaping and masonry products for a period of 50 years from the date of the product's purchase. The warranty applies to normal, non-abusive use of the product. To preserve the original appearance of your products, we recommend that you consult our *Preventive Maintenance Guide for Concrete Landscaping Products* available on our website.

IN ALL CASES DETAILED BELOW, THE WARRANTY IS LIMITED TO THE PRODUCTS' MARKET VALUE.

### How do I make a claim?

 [permacon.ca/en/warranty/](https://permacon.ca/en/warranty/)



Proof of purchase will be required to proceed with a claim request. No claims will be accepted without proof of purchase.<sup>2</sup>

All claims must be reported within 15 days of the discovery of a product's defect. To validate a claim, a Permacon representative will arrive to inspect the defective products in order to confirm whether the claim is admissible. Therefore, it is essential to provide Permacon with the necessary access to inspect and take photos of the products in question.

This warranty is the only one that is presently offered. Because Permacon continually improves and modifies its products, it may alter and discontinue products at any time, and therefore may replace warranty-covered products with products of similar quality or offer monetary compensation if the products under warranty have been discontinued or are no longer on the market while the warranty is active.

In the event that a product is found to be non-conforming by Permacon or an authorized representative of the company, and in order to proceed with compensation, Permacon will take into account the number of months during which the landscape or masonry products were in the possession of the owner or their contractor, up to the date of the claim, and will prorate the amount of the payment or replacement to be made accordingly.

For example: if the purchaser makes a warranty claim in the last month of the 10th year of the warranty (i.e., the 120th month), the manufacturer, at its sole discretion, shall either:

- Provide a replacement for the product in question if still available (only the defective product will be replaced)
- Return 480/600 of the price paid for the products to the owner. No labour, transportation, or other compensation will be covered by Permacon

### Transferability

The warranty is transferable. Proof of warranty registration will still be required in the event of a claim. The prorated period will be based on the 50-year warranty period remaining as an assignee, if the purchaser transfers the warranty to a subsequent owner, as described above.

## 50 Year Warranty | Landscape Products



### Exclusions

A landscape or masonry product installed on an area of more than **100 square feet** confirms the acceptance of the product received on site and that no claim can be made to Permacon regarding the colour, size, or texture of the product.

This warranty excludes all products not supplied by Permacon, as well as any defects, failures, or damages that may result from the actions listed below:

- Contact with chemicals or cleaning products
- Damage caused by pressure washers
- Improper installation or other construction activities that do not comply with the installation standards established by ICPI, NCMA or IMQ, the National Building Code or the installation methods and tips recommended by Permacon. The installation guides provided by Permacon represent certain installation situations and are not exhaustive. It is therefore strongly recommended that you consult a qualified professional to ensure the proper installation of Permacon products on a specific job site.
- Defective design or construction resulting in sagging, shifting, or failure
- Breakage due to shock, impact, or excessive load during handling, use, or transportation
- Natural disaster or other uncontrollable event
- Breakage and damage to products caused by soil movement or building movement as well as misuse of construction, compaction, or snow removal equipment. The warranty does not cover surface deterioration caused by the misuse of sodium chloride (NaCl) to de-ice pavers, slabs, or steps.
- The use of sodium chloride (NaCl) on the following products:
  - Step Valentia
  - Valentia Block
- Be.OnStone and Mirage products sold by Permacon

### Installation

When installing masonry products, it is vital that the work be cleaned to remove residue and contaminants left on the stone or brick. Permacon accepts no responsibility for stains and colour changes caused by installation residue or the consequences of cleaning said residue.

### Colour

**The presence of natural ingredients used in the manufacturing process varies from one product to another. Therefore, the product received on the job site will not be completely identical to the products presented in our commercial presentations (catalogs, samples, displays). Any difference in colour cannot be attributed to the guarantee.**

Photos of our products in landscape and masonry brochures, as well as in displays such as masonry panels and landscape racks at our distributors, are not an exact representation of the products that will be delivered to the job site. Permacon offers a variety of products with different colours to reproduce the appearance of natural stone. It is therefore strongly recommended that you view several products directly from your authorized Permacon distributor to see all available colours.

**It is the purchaser's responsibility to approve the products delivered to the job site prior to installation and to ensure that the colour is satisfactory. It is also recommended to mix products from different pallets received on site. Since variations in colour shades are a natural phenomenon, Permacon does not guarantee colour uniformity between different pallets on the same job site. Product installation constitutes acceptance.**

### Polymeric film

A whitish polymeric film can be found on the surface of our products. This is the result of an inadequate use of polymeric sand. Improper cleaning of slabs and pavers prior to the application of water on the products' surface can cause this whitish polymeric film. This film does not affect the structural integrity of the product. Permacon cannot be held responsible for this phenomenon, which is not covered by the warranty.

### Efflorescence

White traces on the surface of the product are caused by a natural phenomenon called efflorescence. More visible on darker products, efflorescence affects neither the intrinsic technical qualities nor the structural integrity of our products. The possible appearance of efflorescence cannot be the subject of any guarantee on our part. In most cases, efflorescence disappears by itself over time.

**Our Preventive Maintenance Guide for Concrete Landscaping Products**  
is available on our web site  
**permacon.ca**

<sup>1</sup> The following locations are defined as residential: family dwelling of 5 units or less, single family home, garden suite, or townhouse

<sup>2</sup> The following items are considered valid proof of purchase: invoice directly from an authorized Permacon distributor or invoice from a landscape contractor, general contractor, mason, or home builder





# Leader for over 70 years

Committed to offering friendly local service and reducing its carbon footprint, the local production of concrete products remains a priority for Permacon.

For over 70 years, Permacon has been passionately reinventing landscaping and remains the leading manufacturer of concrete products in Canada. The enviable reputation we have built is reflected in the exceptional quality of our products, as well as in the solid relationship of trust we maintain with our partners and customers.

### Think Bigger

In its nine manufacturing plants in Quebec and Ontario, Permacon manufactures state-of-the-art products that stand out and exceed the expectations of the most demanding customers. Permacon is also the supplier of choice for architects and contractors who want exceptional quality and environmentally responsible products.

### Think Further

Whether it's redefining the concrete products industry or implementing best practices, Permacon consistently leads the way. We set trends and bring innovations to life.



**Legend**
**Pedestrian**  
Designed to withstand pedestrian traffic
 **Vehicular**  
Designed to withstand vehicular traffic
 **Permeable**  
Designed to allow runoff to pass through

**Trademarks, Patents and Industrial Drawings**  
 Most of our products are protected by Patent and Industrial Design which is owned by Oldcastle Building Products Canada, Inc. except for those indicated otherwise.  
**Vendome® Pavers:** Canada and United States. Patented, United States, Canada, Mexico and Europe. **Lafitt® Tandem® Wall:** Patented, Canada, United States and Europe. **Rosebel® Slabs:** Patented, Canada, United States, Mexico and pending in Europe. **ARTEX™ Panel System:** Patent pending, Canada, United States and Europe.



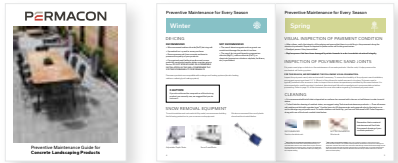
Tools available at **permacon.ca**



**VISUALIZATION TOOL**  
 Create, dare, change, start again... in complete freedom!



**CARE AND MAINTENANCE**  
 Protect your investment



**INSPIRATION**  
 Let yourself be inspired by our gallery of projects







Since 1952, all Permacon products have been made with passion and pride in Canada.



[permacon.ca](http://permacon.ca)

1 888 PERMACON

**PERMACON**  
A CRH COMPANY