

# PERMACON

Stone and  
Brick



2023



Sustainable  
materials  
for a unique  
elegance.



## 15 Stone

- 16 Aria
- 18 Dominion
- 20 Lafitt Alto
- 22 Lafitt
- 24 Lamina
- 26 Lexa
- 28 Lineart
- 30 Maestro
- 32 Mondrian

## 35 Brick

- 36 Cardin
- 38 Cinco Plus
- 39 Cinco Plus Stone
- 40 Melville Norman
- 42 Melville Slik

## 44 Miscellaneous

- 44 Accessories
- 46 Tools
- 50 Warranty



Take the  
time to  
escape at  
home.







Lafitt Stone  
Oasis  
P 22









Elegance  
that stands  
the test of  
time.







Whether smooth or textured, our versatile masonry products are offered in a variety of finishes and colours. Sparking inspiration, our collections will help you create the home of your dreams.

smooth [≡]



With its timeless look, our **smooth** product line is available in a wide range of colors. These prestigious products with their clean lines open up a world of possibilities for contemporary spaces.

textured [^^^]

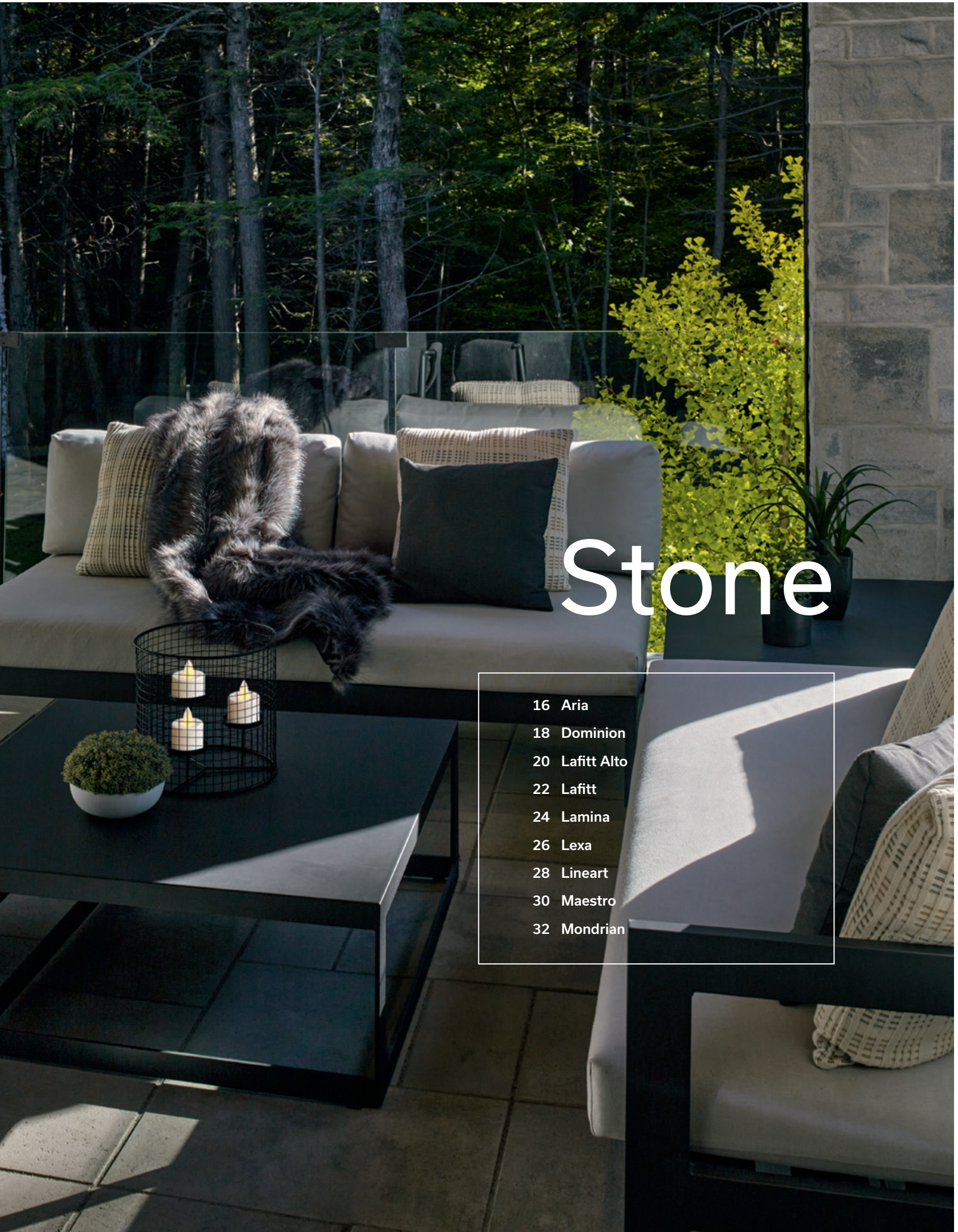


The authentic and classic elegance of cut stone and brick comes to life in our **textured** products. Experience the charm and nobility of natural materials offered in a variety of subtle and sophisticated tones.





**Lafitt Stone**  
Range Scandina Grey  
P 22



# Stone

- 16 Aria
- 18 Dominion
- 20 Lafitt Alto
- 22 Lafitt
- 24 Lamina
- 26 Lexa
- 28 Lineart
- 30 Maestro
- 32 Mondrian





Aria Stone  
Heron

# Aria Stone

- Unit A** 90 mm x 60 mm x var. | 3 1/2" x 2 3/8" x var.
- Unit B** 90 mm x 102 mm x var. | 3 1/2" x 4" x var.
- Unit C** 90 mm x 172 mm x var. | 3 1/2" x 6 3/4" x var.

Visit [permacon.ca](https://permacon.ca) for all dimensions



Blizzard



Heron



Rockland  
Black



Range  
Newport Grey







# Dominion Stone



- Unit A** 90 mm x 190 mm x 390 mm | 3 1/2" x 7 1/2" x 15 3/8" (Sold separately)
- Unit B** 90 mm x 190 mm x 590 mm | 3 1/2" x 7 1/2" x 23 1/4" (Sold separately)
- Unit C** 90 mm x 290 mm x 590 mm | 3 1/2" x 11 7/16" x 23 1/4" (Sold separately)

Colours available for units B and C only

Limestone



Graphite



Milano







# Lafitt Alto Stone



Range  
Chambord Grey



Range  
Margaux Beige



Rockland  
Black



Range  
Newport Grey



Range  
Scandina Grey



- Unit A** 90 mm x 102 mm x var. | 3 1/2" x 4" x var.
- Unit B** 90 mm x 178 mm x var. | 3 1/2" x 7" x var.
- Unit C** 90 mm x 292 mm x var. | 3 1/2" x 11 1/2" x var. (Sold separately)

Visit [permacon.ca](http://permacon.ca) for all dimensions





# Lafitt Stone



Blizzard



Range  
Amboise Beige



Range  
Margaux Beige



Range  
Newport Grey



Range  
Scandina Grey



Range  
Chambord Grey



Rockland  
Black



Oasis



- Unit A** 90 mm x 102 mm x var. | 3 1/2" x 4" x var.
- Unit B** 90 mm x 178 mm x var. | 3 1/2" x 7" x var.
- Unit C** 90 mm x 292 mm x var. | 3 1/2" x 11 1/2" x var. (Sold separately)

Visit [permacon.ca](http://permacon.ca) for all dimensions





# Lamina Stone



**Unit** 90 mm x 95 mm x var. | 3 1/2" x 3 3/4" x var.

Visit [permacon.ca](http://permacon.ca) for all dimensions

Range Margaux Beige



Rockland Black



Range Newport Grey







# Lexa Stone



- Unit A** 90 mm x 76 mm x var. | 3 1/2" x 3" x var.
- Unit B** 90 mm x 114 mm x var. | 3 1/2" x 4 1/2" x var.
- Unit C** 90 mm x 198 mm x var. | 3 1/2" x 7 13/16" x var. (Sold separately)

Visit [permacon.ca](http://permacon.ca) for all dimensions

**Cameo Beige**



**Rockland Black**



**Alpine Grey**







# Lineart Stone



**Unit** 90 mm x 194 mm x 600 mm | 3 1/2" x 7 5/8" x 23 5/8"

**Cameo Beige**



**Sterling Grey**



**Rockland Black**







# Maestro Stone



Unit 90 mm x 90 mm x 890 mm | 3 1/2" x 3 1/2" x 35"

Cameo Beige



Sterling Grey



Rockland Black







# Mondrian Stone



Blizzard



Range  
Amber Beige



Range  
Margaux Beige



Range  
Newport Grey



Range  
Scandina Grey



- Unit A** 90 mm x 76 mm x var. | 3 1/2" x 3" x var.
- Unit B** 90 mm x 114 mm x var. | 3 1/2" x 4 1/2" x var.
- Unit C** 90 mm x 198 mm x var. | 3 1/2" x 7 13/16" x var. (Sold separately)

Visit [permacon.ca](http://permacon.ca) for all dimensions









# Cardin Brick



Unit 90 mm x 79 mm x 257 mm | 3 1/2" x 3 1/8" x 10 1/8"



Arctic  
White



Blizzard







# Cinco Plus Brick



<p>Range <b>Margaux Beige</b></p> 	<p>Range <b>Newport Grey</b></p> 	<p>Range <b>Scandina Grey</b></p> 	<p>Range <b>Chambord Grey</b></p> 
<p>Range <b>Grey and Black</b></p> 	<p>Range <b>Lennox Grey</b></p> 	<p><b>Rockland Black</b></p> 	

**Unit** 90 mm x 92 mm x var. | 3 1/2" x 3 5/8" x var.


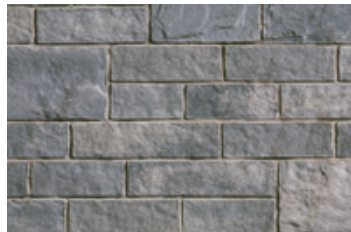


Visit [permacon.ca](http://permacon.ca) for all dimensions

\* Range Grey and Black, Range Lennox Grey and Rockland Black are not available in the Greater Toronto area



# Cinco Plus Stone



<p>Range <b>Margaux Beige</b></p> 	<p>Range <b>Newport Grey</b></p> 	<p>Range <b>Scandina Grey</b></p> 	<p>Range <b>Chambord Grey</b></p> 
---	--	---	---

**Unit** 90 mm x 196 mm x var. | 3 1/2" x 7 23/32" x var.

Visit [permacon.ca](http://permacon.ca) for all dimensions





# Melville Norman Brick



Unit 90 mm x 57 mm x 290 mm | 3 1/2" x 2 1/4" x 11 7/16"

Alpine Grey



Sterling Grey



Rockland Black







Melville Slik  
Brick  
Range Newport  
Grey

# Melville Slik Brick



Range  
Amber Beige



Range  
Margaux Beige



Cameo  
Beige



Alpine  
Grey



Range  
Newport Grey



Range  
Scandina Grey



Sterling  
Grey



Range  
Chambord Grey



Range  
Vintage Brown



Rockland  
Black



- Unit A

90 mm x 79 mm x 257 mm | 3 1/2" x 3 1/8" x 10 1/8"
- Unit B

90 mm x 79 mm x 257 mm / 212 mm | 3 1/2" x 3 1/8" x 10 1/8" / 8 3/8"





# Accessories

45 Dominion Window Sill  
45 Cardiff Window Sills

Cardiff Window Sill -  
Chiselled  
Off-White  
P 45  
Mondrian Stone  
Range Scandinavia Grey  
P 32

## Reversible Dominion Window Sill



**Reversible Dominion Window Sill**  
145 mm x 75 mm x 914 mm  
5 11/16" x 3" x 36"



**Limestone**



## Cardiff Window Sills



Smooth  
**Arctic**



Smooth  
**Off-White**



Smooth  
**Sterling Grey**



Smooth  
**Rockland Black**



Chiselled  
**Off-White**



Chiselled  
**Rockland Black**



**Cardiff Window Sill - Chiselled**  
150 mm x 79 mm x 948 mm  
5 7/8" x 3 1/8" x 37 3/8"



**Cardiff Window Sill - Smooth**  
150 mm x 79 mm x 948 mm  
5 7/8" x 3 1/8" x 37 3/8"







# Permacon's masonry products: the best for your exterior cladding



## A rock-solid investment

Choose quality and durable products that match your style, save on maintenance and increase the value of your property. The bricks and concrete stones we offer are non-combustible, almost indestructible and resistant to weather and harsh winters.



## Styles for every taste

Whatever the style (farmhouse, modern, traditional, etc.), you'll find the stone or brick that will create the atmosphere you want. Play with our range of sizes, textures and colours, and create designs to your image.



## An exceptional comfort

Choose concrete products to improve your home energy performance, and enjoy a warmer house in winter and a cooler one in summer. Concrete products also provide the best soundproofing system: say goodbye to traffic and neighbourhood noise!



## Easy maintenance

Your brick or stone cladding will remain beautiful for a very long time. There's no need to invest in maintenance, painting or refinishing: a few simple, regular actions are all it takes to keep our concrete products in good condition and enjoy a spotless house.

Bringing masonry projects to life, design that fits your needs, down to the last detail.

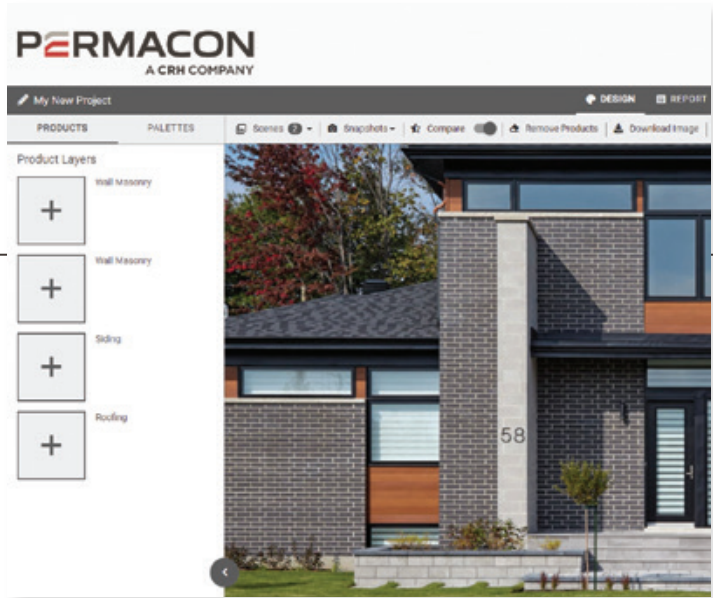
# A unique experience for professionals



As the leading Canadian manufacturer of masonry products, Permacon is a trusted partner that understands the challenges faced by professionals and supports them in carrying out their most ambitious projects.

We have partnered with BIMsmith—offering the leading free online product search platform for building professionals—to help you integrate Permacon products into your design software and combine them more easily.

With the Permacon BIM library, you will have access to a wide range of technical information and be able to search, configure and download BIM objects for our masonry products. You can also use BIMsmith Forge, a tool that allows an easy configuration of complete assemblies. Create your project from scratch or choose from one of our assembly model to save time! The other professional tools we have developed are available on SketchUp, AutoCAD, Autodesk and other commonly used 3D design and rendering software.







## Leader for over 70 years

Committed to offering friendly local service and reducing its carbon footprint, the local production of concrete products remains a priority for Permacon.

For over 70 years, Permacon has been passionately reinventing masonry products and remains the leading manufacturer of concrete products in Canada. The enviable reputation we have built is reflected in the exceptional quality of our products, as well as in the solid relationship of trust we maintain with our partners and customers.

### Think bigger

In its nine manufacturing plants in Quebec and Ontario, Permacon manufactures state-of-the-art products that stand out and exceed the expectations of the most demanding customers. Permacon is also the supplier of choice for architects and contractors who want exceptional quality and environmentally responsible products.

### Think further

Whether it's redefining the concrete products industry or implementing best practices, Permacon consistently leads the way. We set trends and bring innovations to life.

**PERMACON**  
A CRH COMPANY

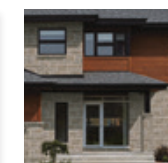


Tools  
available at  
**permacon.ca**



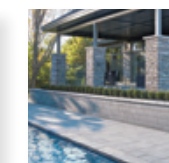
### VISUALIZATION TOOL

Create, dare, change, start again... in complete freedom!



### INSPIRATION

Let yourself be inspired by our gallery of projects





# 50 Year Warranty

## Masonry Products



50 Year Warranty | **Masonry Products**



Permacon's 50-year warranty applies to landscape and masonry products including Suretouch intended for residential use<sup>1</sup>. This warranty statement affirms that products manufactured by Permacon meet the requirements of the CSA (Canadian Standard Association) and ASTM (American Society for Testing and Materials) standards.

*For details regarding commercial applications, please refer to our institutional, commercial and industrial warranty.*

Permacon guarantees that, as of the date of delivery, our concrete products are free from manufacturing defects. Provided that the conditions set forth below are met, Permacon guarantees the structural integrity of the concrete in its landscaping and masonry products for a period of 50 years from the date of the product's purchase. The warranty applies to normal, non-abusive use of the product. To preserve the original appearance of your products, we recommend that you consult our *Preventive Maintenance Guide for Concrete Landscaping Products* available on our website.

IN ALL CASES DETAILED BELOW, THE WARRANTY IS LIMITED TO THE PRODUCTS' MARKET VALUE.

### How do I make a claim?

 **1-888-PERMACON (1-888-737-6226)**  
 **permacon.ca/contactus**



Proof of purchase will be required to proceed with a claim request. No claims will be accepted without proof of purchase.<sup>2</sup>

All claims must be reported within 15 days of the discovery of a product's defect. To validate a claim, a Permacon representative will arrive to inspect the defective products in order to confirm whether the claim is admissible. Therefore, it is essential to provide Permacon with the necessary access to inspect and take photos of the products in question.

This warranty is the only one that is presently offered. Because Permacon continually improves and modifies its products, it may alter and discontinue products at any time, and therefore may replace warranty-covered products with products of similar quality or offer monetary compensation if the products under warranty have been discontinued or are no longer on the market while the warranty is active.

In the event that a product is found to be non-conforming by Permacon or an authorized representative of the company, and in order to proceed with compensation, Permacon will take into account the number of months during which the landscape or masonry products were in the possession of the

owner or their contractor, up to the date of the claim, and will prorate the amount of the payment or replacement to be made accordingly.

For example: if the purchaser makes a warranty claim in the last month of the 10th year of the warranty (i.e., the 120th month), the manufacturer, at its sole discretion, shall either:

- Provide a replacement for the product in question if still available (only the defective product will be replaced)
- Return 480/600 of the price paid for the products to the owner. No labour, transportation, or other compensation will be covered by Permacon

### Transferability

The warranty is transferable. Proof of warranty registration will still be required in the event of a claim. The prorated period will be based on the 50-year warranty period remaining as an assignee, if the purchaser transfers the warranty to a subsequent owner, as described above.

### Exclusions

A landscape or masonry product installed on an area of more than **100 square feet** confirms the acceptance of the product received on site and that no claim can be made to Permacon regarding the colour, size, or texture of the product.

This warranty excludes all products not supplied by Permacon, as well as any defects, failures, or damages that may result from the actions listed below:

- Contact with chemicals or cleaning products
- Damage caused by pressure washers
- Improper installation or other construction activities that do not comply with the installation standards established by ICPI, NCMA or IMQ, the National Building Code or the installation methods and tips recommended by Permacon. The installation guides provided by Permacon represent certain installation situations and are not exhaustive. It is therefore strongly recommended that you consult a qualified professional to ensure the proper installation of Permacon products on a specific job site.
- Defective design or construction resulting in sagging, shifting, or failure
- Breakage due to shock, impact, or excessive load during handling, use, or transportation
- Natural disaster or other uncontrollable event
- Breakage and damage to products caused by soil movement or building movement as well as misuse of construction, compaction, or snow removal equipment. The warranty does not cover surface deterioration caused by the misuse of sodium chloride (NaCl) to de-ice pavers, slabs, or steps.
- The use of sodium chloride (NaCl) on the following products:
  - Step Valentia
  - Valentia Block
- Be.OnStone and Mirage products sold by Permacon

### Installation

When installing masonry products, it is vital that the work be cleaned to remove residue and contaminants left on the stone or brick. Permacon accepts no responsibility for stains and colour changes caused by installation residue or the consequences of cleaning said residue.

### Colour

**The presence of natural ingredients used in the manufacturing process varies from one product to another. Therefore, the product received on the job site will not be completely identical to the products presented in our commercial presentations (catalogs, samples, displays). Any difference in colour cannot be attributed to the guarantee.**

Photos of our products in landscape and masonry brochures, as well as in displays such as masonry panels and landscape racks at our distributors, are not an exact representation of the products that will be delivered to the job site. Permacon offers a variety of products with different colours to reproduce the appearance of natural stone. It is therefore strongly recommended that you view several products directly from your authorized Permacon distributor to see all available colours.

**It is the purchaser's responsibility to approve the products delivered to the job site prior to installation and to ensure that the colour is satisfactory. It is also recommended to mix products from different pallets received on site. Since variations in colour shades are a natural phenomenon, Permacon does not guarantee colour uniformity between different pallets on the same job site. Product installation constitutes acceptance.**

### Polymeric film

A whitish polymeric film can be found on the surface of our products. This is the result of an inadequate use of polymeric sand. Improper cleaning of slabs and pavers prior to the application of water on the products' surface can cause this whitish polymeric film. This film does not affect the structural integrity of the product. Permacon cannot be held responsible for this phenomenon, which is not covered by the warranty.

### Efflorescence

White traces on the surface of the product are caused by a natural phenomenon called efflorescence. More visible on darker products, efflorescence affects neither the intrinsic technical qualities nor the structural integrity of our products. The possible appearance of efflorescence cannot be the subject of any guarantee on our part. In most cases, efflorescence disappears by itself over time.

<sup>1</sup> The following locations are defined as residential: family dwelling of 5 units or less, single family home, garden suite, or townhouse

<sup>2</sup> The following items are considered valid proof of purchase: invoice directly from an authorized Permacon distributor or invoice from a landscape contractor, general contractor, mason, or home builder





Since 1952, all Permacon products have been made with passion and pride in Canada.



[permacon.ca](http://permacon.ca)

1 888 PERMACON

**PERMACON**  
A CRH COMPANY