

A photograph of a modern building facade featuring light-colored stone and brickwork, large windows, and a glass entrance door. A potted plant with orange flowers is in the foreground.

PERMACON

S t o n e a n d B r i c k

2 0 2 5



Lafitt Alto Stone Range Chambord Grey and Range Newport Grey - P 24

Create a seamless transition between inside and outside your home with complimentary materials that add warmth and harmony to your space.

Cover: Lexa Stone Cameo Beige - P 28



Contents

Stone

- 18 Aria
- 20 Dominion
- 22 Lafitt
- 24 Lafitt Alto
- 26 Lamina
- 28 Lexa
- 30 Maestro
- 32 Mondrian
- 34 Vika *New*

16

Brick

- 38 Cardin
- 40 Cinco Plus
- 41 Cinco Plus Stone
- 42 Melville Norman
- 44 Melville Slik

36

Miscellaneous

- 46 Accessories
- 48 Tools
- 50 Warranty

46



The Oasis Lafitt Stone brings a warm, rustic charm to your home. Combined with Melville 60 slabs in Amber Beige, you'll have the perfect pairing!



Lafitt Stone
Oasis with bagged mortar joint - 22



Enhance your home's exterior
with beautiful stonework





Seamlessly integrate your home into its natural surroundings with the Lafitt Stone in Margaux Beige with Rockland Black insertions.

Redefine your space
with elegance and grace





Nature and stone
in perfect harmony





Harmonious design: The combination of Lafitt Stone and Rosebel Slab in Margaux Beige complement one another beautifully, creating an exquisite, cohesive design.

Where countryside serenity meets
contemporary elegance.





Lafitt Stone Range Chambord Grey - 22



Decades of *expertise and innovation*

A Big Family

Oldcastle APG has over 8,500 family members throughout our network of facilities across North America. With over 200 locations, we take pride in being the largest producer of architectural building products on the continent. As industry leaders, we drive the trends and set the standards for quality and innovation.

Locally Made

With nine plants across Quebec and Ontario, Permacon specializes in manufacturing high-quality concrete products crafted to meet the evolving needs of today and tomorrow.

Continuous Innovation

Permacon continually refines its processes to deliver products that embody the latest in innovation and excellence.



Textures and finishes *for all styles*

Create your dream outdoor space with our masonry products, available in a wide range of textures, finishes and colours.



Explore our various collections, including smooth and textured options.







Stone

- 18 Aria
- 20 Dominion
- 22 Lafitt
- 24 Lafitt Alto
- 26 Lamina
- 28 Lexa
- 30 Maestro
- 32 Mondrian
- 34 Vika *New*

Aria Stone





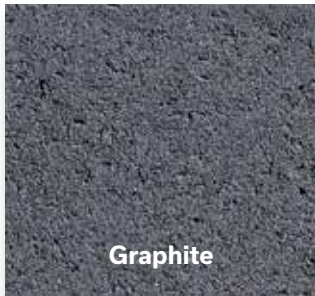
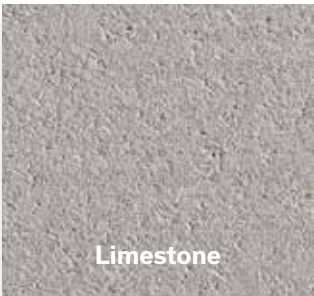
Unit A	90 x 60 mm x var.	3 1/2 x 2 3/8 in. x var.
Unit B	90 x 102 mm x var.	3 1/2 x 4 in. x var.
Unit C*	90 x 172 mm x var.	3 1/2 x 6 3/4 in. x var.

Units A, B and C are sold together and available for all colours.

* Unit C is also sold separately and available in Blizzard, Heron and Rockland Black.



Dominion Stone





Unit A	90 x 190 x 390 mm 3 1/2 x 7 1/2 x 15 3/8 in. (sold separately)
Unit B	90 x 190 x 590 mm 3 1/2 x 7 1/2 x 23 1/4 in. (sold separately)
Unit C	90 x 290 x 590 mm 3 1/2 x 11 7/16 x 23 1/4 in. (sold separately)

Milano and Graphite are only available for units B and C.



Lafitt Stone



Range
Chambord Grey



Blizzard



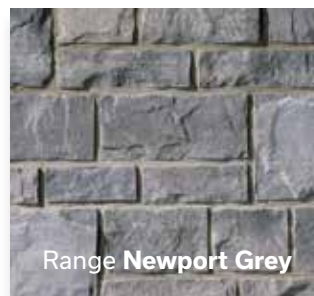
Range **Scandina Grey**



Oasis



Range **Margaux Beige**



Range **Newport Grey**



Range **Chambord Grey**



Terra



Rockland Black

- Unit A** 90 x 102 mm x var. | 3 1/2 x 4 in. x var.
- Unit B** 90 x 178 mm x var. | 3 1/2 x 7 in. x var.
- Unit C*** 90 x 292 mm x var. | 3 1/2 x 11 1/2 in. x var.

* Sold separately

Lafitt Alto Stone



Range Newport Grey with
Rockland Black insertions



- Unit A** 90 x 102 mm x var. | 3 1/2 x 4 in. x var.
- Unit B** 90 x 178 mm x var. | 3 1/2 x 7 in. x var.
- Unit C*** 90 x 292 mm x var. | 3 1/2 x 11 1/2 in. x var.

* Sold separately

Lamina Stone



Range **Margaux Beige**



Range **Newport Grey**



Rockland Black

Unit
90 x 95 mm x var.
3 1/2 x 3 3/4 in. x var.



Range
Newport Grey



Lexa Stone



Cameo Beige



Alpine Grey



Cameo Beige



Unit A	90 x 76 mm x var.	3 1/2 x 3 in. x var.
Unit B	90 x 114 mm x var.	3 1/2 x 4 1/2 in. x var.
Unit C*	90 x 198 mm x var.	3 1/2 x 7 13/16 in. x var.

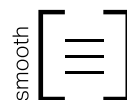
* Sold separately



Maestro Stone



Cameo
Beige



Cameo Beige

Unit

90 x 90 x 890 mm

3 1/2 x 3 1/2 x 35 in.

Mondrian Stone



Range
Scandinavia Grey



Formats available in Quebec, Ottawa and Atlantic provinces:

Unit A	90 x 60 mm x var.	3 1/2 x 2 3/8 in. x var.
Unit B	90 x 102 mm x var.	3 1/2 x 4 in. x var.
Unit C	90 x 172 mm x var.	3 1/2 x 6 3/4 in. x var.

Formats available in Ontario:

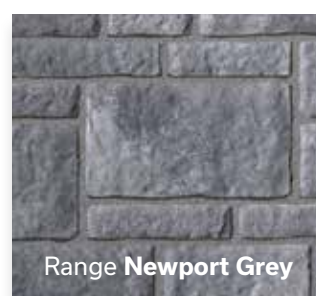
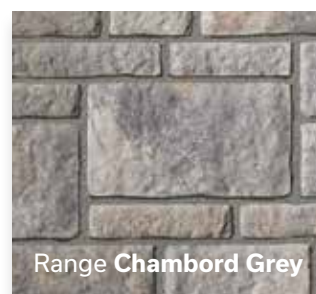
Unit A	90 x 76 mm x var.	3 1/2 x 3 in. x var.
Unit B	90 x 114 mm x var.	3 1/2 x 4 1/2 in. x var.
Unit C*	90 x 198 mm x var.	3 1/2 x 7 13/16 in. x var.

* Sold separately

Vika Stone *New*



Oasis



Unit A

90 x 56.5 mm x var.
3 1/2 x 2 1/4 in. x var.

Unit B

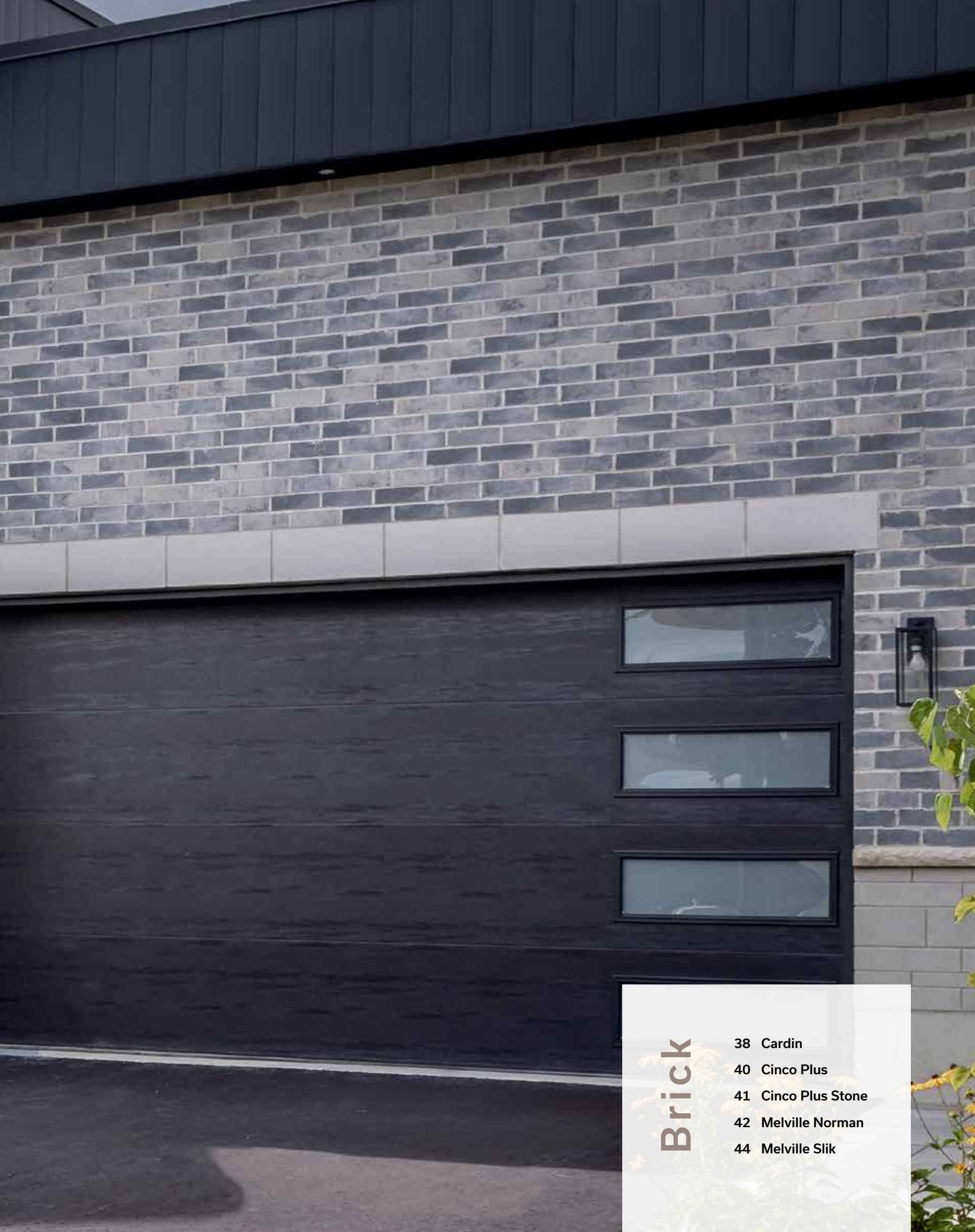
90 x 123 mm x var.
3 1/2 x 4 7/8 in. x var.

Unit C

90 x 190 mm x var.
3 1/2 x 7 1/2 in. x var.



Melville Slik Brick Range Newport Grey - P 44
Aria Stone Heron - P 18



Brick

- 38 Cardin
- 40 Cinco Plus
- 41 Cinco Plus Stone
- 42 Melville Norman
- 44 Melville Slik

Cardin Brick





Unit
90 x 79 x 257 mm
3 1/2 x 3 1/8 x 10 1/8 in.



Cinco Plus Brick



Range **Margaux Beige**



Range **Lennox Grey**



Range **Scandina Grey**



Range **Chambord Grey**



Range **Grey and Black**



Range **Newport Grey**



Rockland Black

Unit

90 x 92 mm x var.

3 1/2 x 3 5/8 in. x var.

Range Grey and Black, Range Lennox Grey and Rockland Black are not available in the Greater Toronto Area.



Range
Newport Grey

Cinco Plus Stone



Range **Scandina Grey**



Range **Newport Grey**

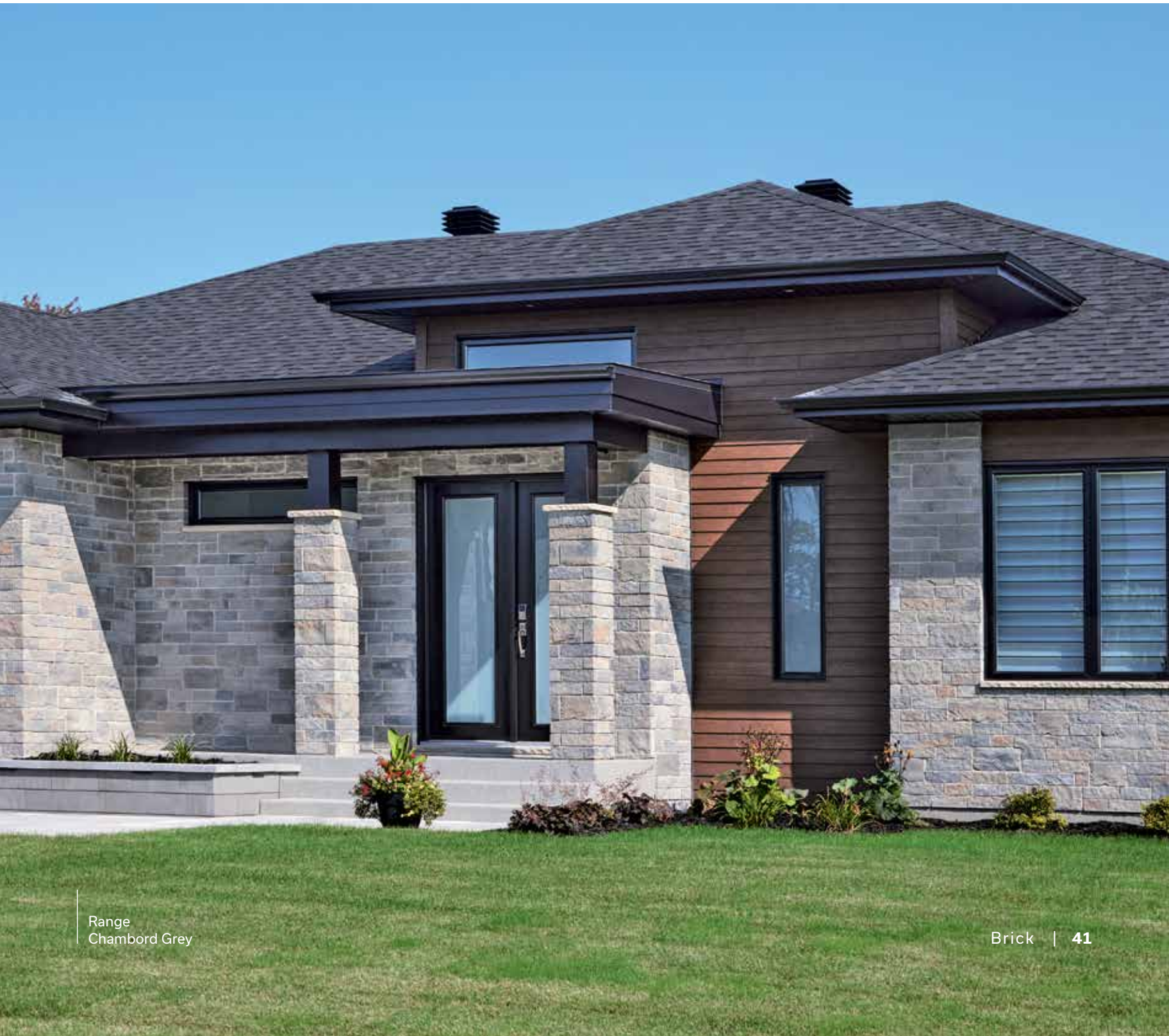


Range **Chambord Grey**

Unit

90 x 196 mm x var.

3 1/2 x 7 23/32 in. x var.



Range
Chambord Grey

Melville Norman Brick



Alpine
Grey



Unit
 90 x 57 x 290 mm
 3 1/2 x 2 1/4 x 11 7/16 in.

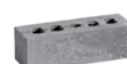
Melville Slik Brick



Range
Scandinia Grey



Unit 90 x 79 x 257 mm | 3 1/2 x 3 1/8 x 10 1/8 in.





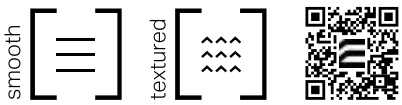
Accessories

47 Dominion Jamb
and Reversible
Window Sill

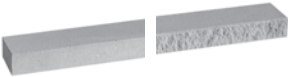
47 Cardiff Window Sills

Cardiff Window Sill - Chiselled Off-White - P 47
Mondrian Stone Range Scandina Grey - P 32

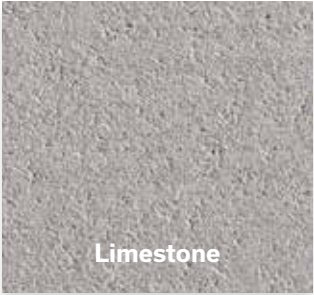
Dominion Jamb and Reversible Window Sill



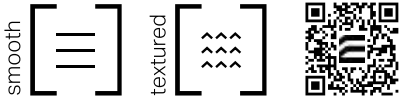
Reversible Dominion Window Sill
145 x 75 x 914 mm | 5 11/16 x 3 x 36 in.



Dominion Jamb
89 x 254 x 610 mm | 3 1/2 x 10 x 24 in.



Cardiff Window Sill



Cardiff Window Sill - Smooth
150 x 79 x 948 mm | 5 7/8 x 3 1/8 x 37 3/8 in.



Cardiff Window Sill - Chiselled
150 x 79 x 948 mm | 5 7/8 x 3 1/8 x 37 3/8 in.





**Permacon's
masonry products
when sustainability
meets aesthetics**

Build masonry projects that exceed all expectations.



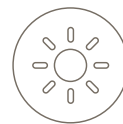
Sustainable Investment

- › Long-term investment
- › Energy savings
- › Property value increase



Trendy Styles

- › Unlimited customization
- › Multiple textures and styles
- › Wide range of colours



Maximum Comfort

- › Thermal comfort
- › Weather resistance
- › Acoustic insulation



Easy Maintenance

- › Quick, occasional maintenance
- › No fading
- › No decomposition



Visualization

Imagine your project with the
visualization tool on **permacon.ca**

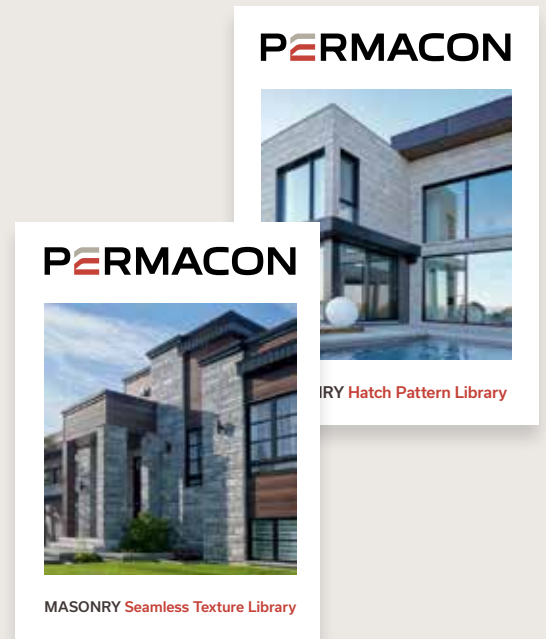


A unique experience for professionals



The samples you need

Make sure you choose the right material for your project by ordering samples of our products for on-site evaluation.



Visual Resources

Explore our online directories of masonry hatch patterns and textures, making it easy to create visually rich, detailed designs.

Discover our dedicated **Pro Zone**. Check out our tools and resources, take advantage of our specialized training courses and more. Turn your ideas into reality with Permacon!



Pro Zone



State-of-the-art tools

Access Permacon seamless textures and hatch patterns for use in your design software.

50-Year Warranty

Masonry Products



Permacon's 50-year warranty applies to landscape and masonry products including Suretouch intended for residential use¹. This warranty statement affirms that products manufactured by Permacon meet the requirements of CSA (Canadian Standard Association) and ASTM (American Society for Testing and Materials) standards.

For details regarding commercial applications, please refer to our institutional, commercial and industrial warranty.

Permacon guarantees that, as of the date of delivery, its concrete products are free from manufacturing defects. Provided that the conditions set forth below are met, Permacon guarantees the structural integrity of the concrete in its landscaping and masonry products for a period of 50 years from the date of the product's purchase. The warranty applies to normal, non-abusive use of the product. To preserve the original appearance of your products, we recommend that you consult our **Landscape Maintenance Guide** available on our website.

IN ALL CASES DETAILED BELOW, THE WARRANTY IS LIMITED TO THE PRODUCTS' MARKET VALUE.

How do I make a claim?



permacon.ca/en/warranty/



Proof of purchase is required to proceed with a claim request. No claims will be accepted without proof of purchase.²

All claims must be reported within 15 days of the discovery of a product's defect. To validate a claim, a Permacon representative will arrive to inspect the defective products in order to confirm whether the claim is eligible. Therefore, it is essential to provide Permacon with the necessary access to inspect and take photos of the affected products.

This warranty is the only one that is presently offered. Because Permacon continually improves and modifies its products, it may alter and discontinue products at any time, and therefore may replace warranty-covered products with products of similar quality or offer monetary compensation if the products under warranty have been discontinued or are no longer on the market while the warranty is active.

In the event that a product is found to be non-compliant by Permacon or an authorized representative of the company, and in order to proceed with compensation, Permacon will take into account the number of months during which the

landscape or masonry products were in the possession of the owner or their contractor, up to the date of the claim, and will prorate the amount of the payment or replacement to be made accordingly.

For example, if the purchaser makes a warranty claim in the last month of the 10th year of the warranty (i.e., the 120th month), the manufacturer, at its sole discretion, shall either:

- Provide a replacement for the product in question if still available (only the defective product will be replaced);
- Return 480/600 of the price paid for the products to the owner. No labour, transportation, or other compensation will be covered by Permacon.

Transferability

The warranty is transferable. Proof of warranty registration will still be required in the event of a claim. The prorated period will be based on the 50-year warranty period remaining as an assignee, if the purchaser transfers the warranty to a subsequent owner, as described above.

¹ The following locations are defined as residential: family dwelling of five units or less, single family homes, garden suites, or townhouses.

² The following documents are considered valid proof of purchase: invoices directly from an authorized Permacon distributor, or invoice from a landscape contractor, general contractor, mason, or home builder.

Exclusions

A landscape or masonry product installed on an area of more than **100 square feet** confirms the acceptance of the product received on the job site and that no claim can be made to Permacon regarding the colour, size, or texture of the product.

This warranty excludes all products not supplied by Permacon, as well as any defects, failures, or damages that may result from the actions listed below:

- Contact with chemicals or cleaning products;
- Damage caused by pressure washers;
- Improper installation or other construction activities that do not comply with the installation standards established by ICPI, NCMA or IMQ, the National Building Code or the installation methods and tips recommended by Permacon. The installation guides provided by Permacon represent certain installation situations and are not exhaustive. It is therefore strongly recommended that you consult a qualified professional to ensure the proper installation of Permacon products on a specific job site;
- Defective design or construction resulting in sagging, shifting, or failure;
- Breakage due to shock, impact, or excessive load during handling, use, or transportation;
- Natural disaster or other uncontrollable event;
- Breakage and damage to products caused by soil movement or building movement as well as misuse of construction, compaction, or snow removal equipment. The warranty does not cover surface deterioration caused by the misuse of sodium chloride (NaCl) to de-ice pavers, slabs, or steps;
- The use of sodium chloride (NaCl) on the following products:
 - Step Valentia;
 - Valentia Block;
- Be.OnStone, Mirage and Techniseal products sold by Permacon.

Installation

When installing masonry products, all work must be cleaned to remove any residues and contaminants left on the stone or brick. Permacon accepts no responsibility for stains and colour changes caused by installation residue or the consequences of cleaning these residues.

Colour

The presence of natural ingredients used in the manufacturing process varies from one product to another. Therefore, the product received on the job site will not be completely identical to the products displayed in our commercial presentations (catalogs, samples, displays). Any difference in colour will not be covered by the guarantee.

Photos of our products in landscape and masonry brochures, as well as in displays such as masonry panels and landscape racks at our distributors, are not an exact representation of the products that will be delivered to the job site. Permacon offers a variety of products with different colours to reproduce the appearance of natural stone. It is therefore strongly recommended that you view several products directly from your authorized Permacon distributor to see all available colours.

It is the purchaser's responsibility to approve the products (and their colour) delivered to the job site prior to installation to confirm satisfaction. It is also recommended to mix products from different pallets received on the job site. Since variations in colour shades are a natural phenomenon, Permacon does not guarantee colour uniformity between different pallets on the same job site. Product installation constitutes acceptance.

Polymeric film

A whitish polymeric film can be found on the surface of Permacon's products. This is the result of an inadequate use of polymeric sand. Improper cleaning of slabs and pavers prior to the application of water on the product surface can cause this whitish polymeric film. This film does not affect the structural integrity of the product. Permacon cannot be held responsible for this phenomenon, which is not covered by the warranty.

Efflorescence

White traces on the surface of the product are caused by a natural phenomenon called efflorescence. More visible on darker products, efflorescence affects neither the intrinsic technical qualities nor the structural integrity of Permacon's products. The possible appearance of efflorescence cannot be the subject of any guarantee. In most cases, efflorescence disappears by itself over time.

Since 1952, all Permacon
products have been made with
passion and pride in Canada.



permacon.ca
1 888 PERMACON



PERMACON
A CRH COMPANY